

Tze Shin transportation services include domestic container, truck transportation & terminal, petrochemistry and dangerous goods transport, as well as bulk logistics etc.



TZE SHIN International Co., Ltd.

2025 Investor Conference



志信國際股份有限公司
Tze Shin International Co., Ltd.

Stock code: 2611

Disclaimer

- This presentation is prepared according to the reviewed financial Statements by CPA and the financial numbers hereby are based on Regulations Governing the Preparation of Financial Reports by Securities and IFRS, please refer to the published financial Statements for full content.
- The presentation may contain forward-looking information and may differ materially from the actual results.
- TSI does not warranty as to the accuracy or completeness of such information and nor assume any undertaking further information becomes available or in light of changing circumstances. You shall not place undue reliance on any forward-looking information.



TZE SHIN INT'L

Agenda

01

**Company
Profile**

02

**Operation
Overview**

03

**Financial
Performance**

04

**Future
Outlook**



01 Company Profile

TZE S...NT'I

Company profile



志信國際股份有限公司
Tze Shin International Co., Ltd.



Established on :

November 15th, 1973



Date of Listing :

October 28th, 1993



Paid-in Capital :

NTD\$ 1,890,022,720



Business Segment :

Truck & Container Transportation

Construction

Tourism & Leisure



Business philosophy

In search of excellence and everlasting management
Sincerity and customer service oriented



“

Determine

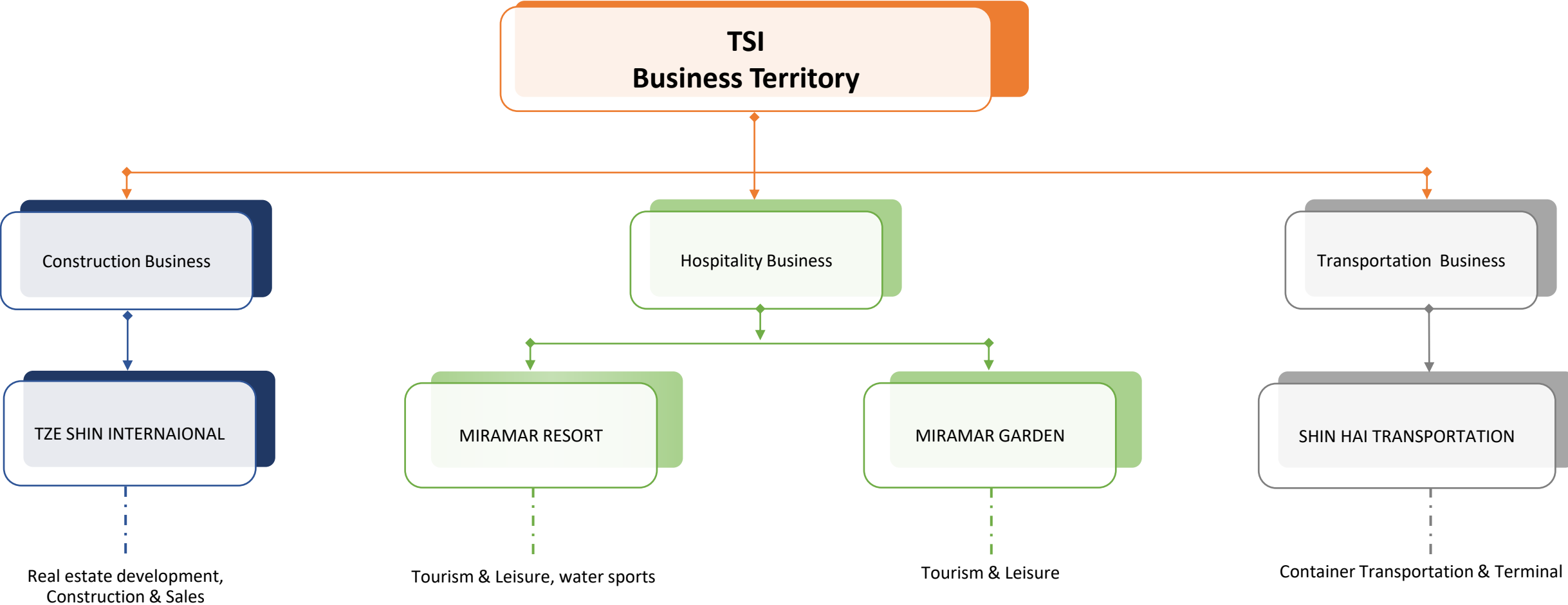
- Pursuit of excellence, Sustainable development

Integrity

- Integrity first, Service-oriented

”

Core Business



TZE SHIN INT'L



02 Operation Overview

TZE SHIN INT'L



Business Segments

The Tze-Shin Company mainly focuses on container transportation, and the business scope spans construction, tourism and leisure, commercial commodity trading, and etc.

The company adheres to the business philosophy of pursuing excellence and sustainability, and is committed to achieving the triple-win goal of customer satisfaction, employee satisfaction and shareholder satisfaction.

Operation Overview – Transportation Business

VALUE
01



The Tze-Shin transportation team's services include long-distance cargo transport across the province, portside container haulage and oil tank container transportation.

VALUE
02



We have set up transportation bases in the northern, central and southern provinces to provide more economical and timely transportation services. Our high-level and detailed quality management system and reduced operating costs will bring the greatest benefits to our customers.

VALUE
03



Tze Shin upholds the core value of safety and customers first to provide a fast, safe, and trustworthy service.

Inland Fleets and Services



**Long-distance
transshipment**

Provide long-distance container haulage between Keelung, Taoyuan, Taichung, Kaohsiung, etc.



**Shipside
transshipment**

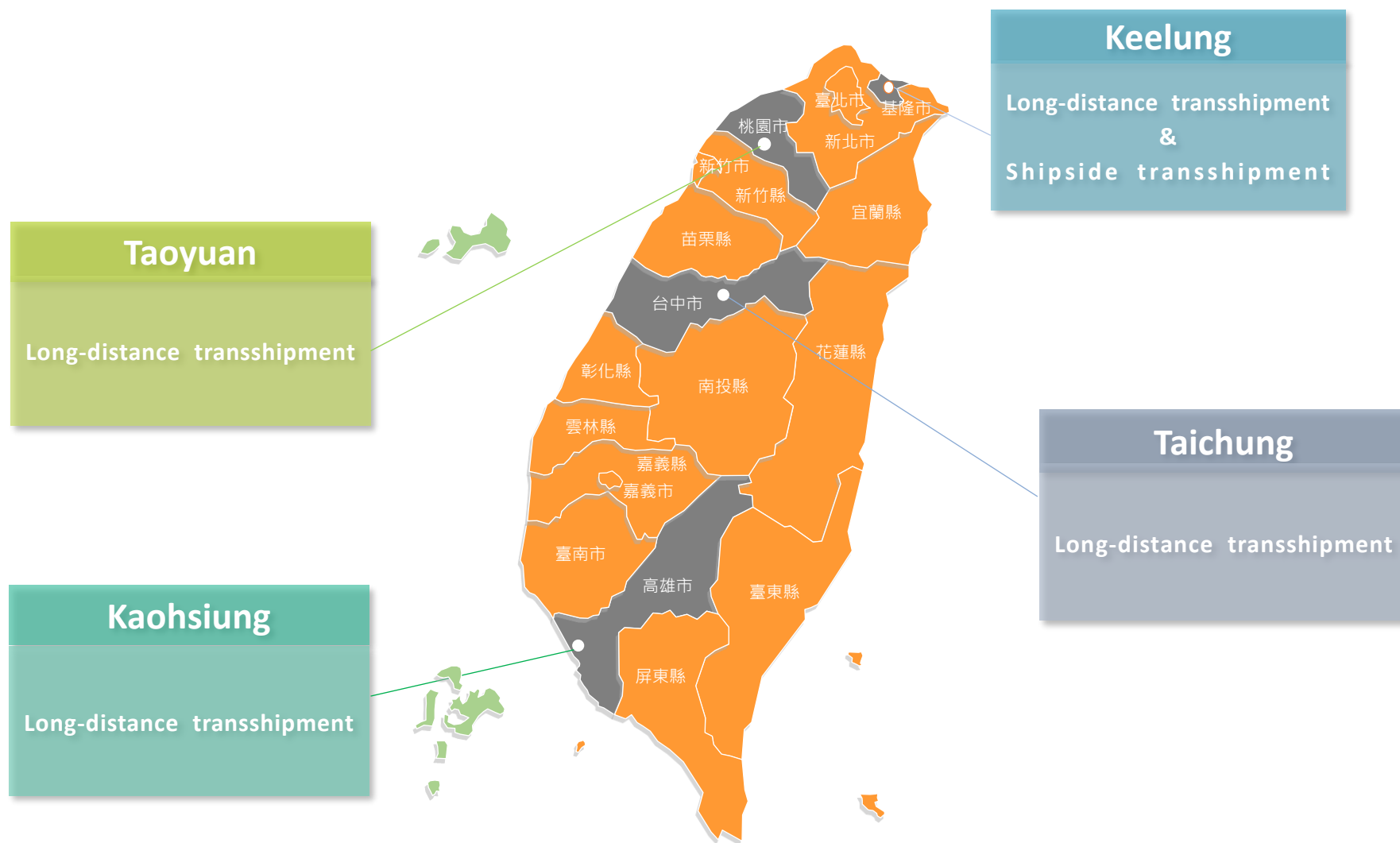
Provide container haulage between shipside and inland container yards.



**Transportation
of Oil container**

Provide oil container haulage between container yards.

Operation Overview –Transportation Business





Operation Overview - Construction Business



Factory



Condo/
apartment



Shopping
center



Leisure
residence

The Construction Department is committed to the development, planning, construction, and related businesses of factories, shopping malls, and residential buildings. It continues to build housing that meets the needs of local residents, thereby enhancing the company's competitive advantage.

Operation Overview

– Construction Business

“TzeShin YunLi” is located in Zhunan Township, Miaoli County, with a site area of approximately 450 ping (about 1,488 square meters). The development plans for 16 villa-style homes.

The site is situated at the intersection of Kezhuan 7th Road and Gongyi Road, next to Datong High School, and is directly in front of TSMC's first row of buildings. The area directly in front of the site features a linear park, and the community benefits from well-established living amenities.

Construction Progress:

Registration for preservation is in process.



Operation Overview – Hospitality Business

Miramar Hotel Group built up as classic European style combined with modern sophistication, by providing professional service, global view and treating customer as family.

Upholding the brand spirit of genuine care, we provide thoughtful service to win international and domestic business recognition.



Operation Overview – Hospitality Business



Diversified software and hardware facilities services

Provide comprehensive and complete service requirements, covering rich and exquisite delicacies, well-equipped fitness clubs, first-class business meeting facilities. Additionally, we provide multi-functional services such as parking, laundry, in-room dining, business secretarial services, babysitting, and private butler services. Our services are designed to meet the diverse needs of both leisure and vacation travelers as well as business professionals.



Operation Overview – Hospitality Business

- The Miramar Garden Hotel initiated a comprehensive five-month renovation project in November 2022. It reopened with brand new luxurious guest rooms on January 18, 2023, to welcome guests.
- In 2024, the annual occupancy rate was 93%. The average occupancy rate for the first three quarters of 2025 remained at 93%, maintaining the best operational performance since opening.



03 Financial Performance

TZE SHIN INT'L

Balance Sheet (Consolidated)

In Thousands of NTD

Items	2025.09.30	2024.12.31	2024.09.30
Current assets	2,799,580	2,839,618	2,873,440
Non-current assets	1,334,441	1,590,161	1,620,643
Total assets	4,134,021	4,429,779	4,494,083
Current liabilities	389,931	448,540	436,173
Non-current liabilities	884,755	808,383	807,421
Total liabilities	1,274,686	1,256,923	1,243,594
Total equity of the owner of the Company	2,682,080	2,967,214	3,022,776
Non-controlling interests	177,255	205,642	227,713
Total equity	2,859,335	3,172,856	3,250,489
Total Liabilities and Equity	4,134,021	4,429,779	4,494,083

Income Statements (Consolidated)

In Thousands of NTD

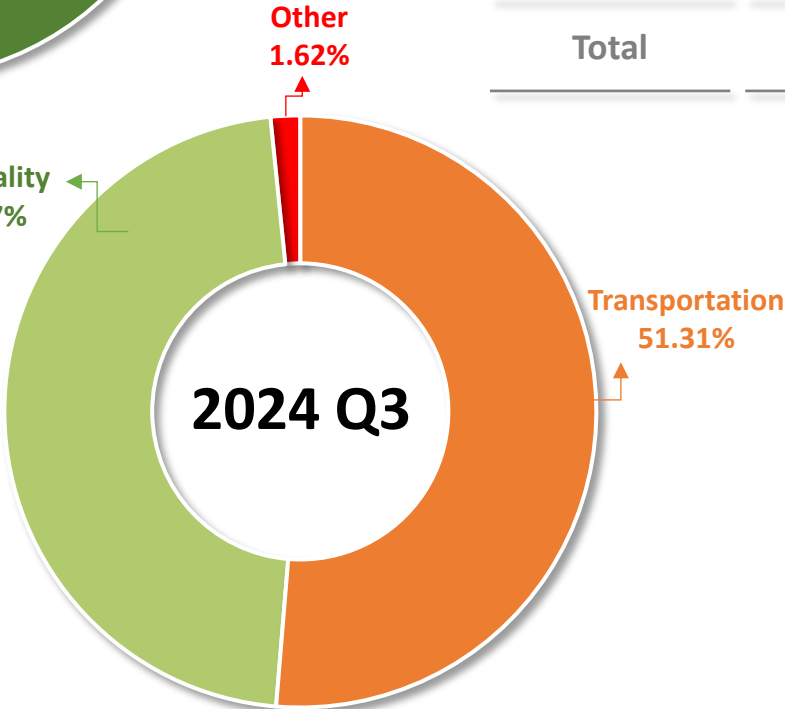
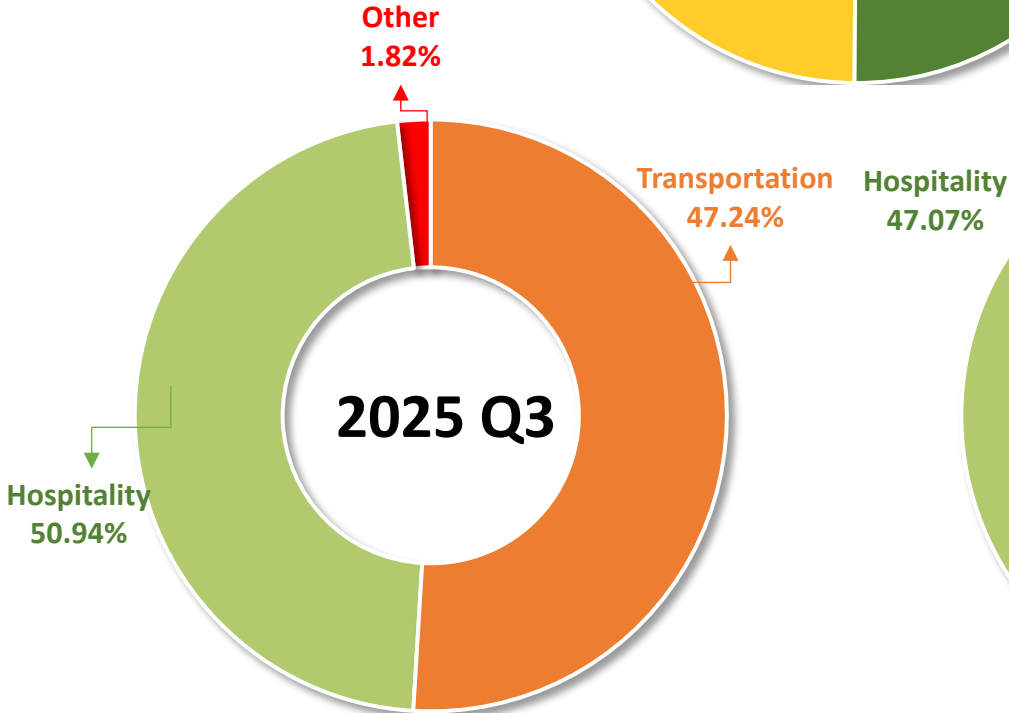
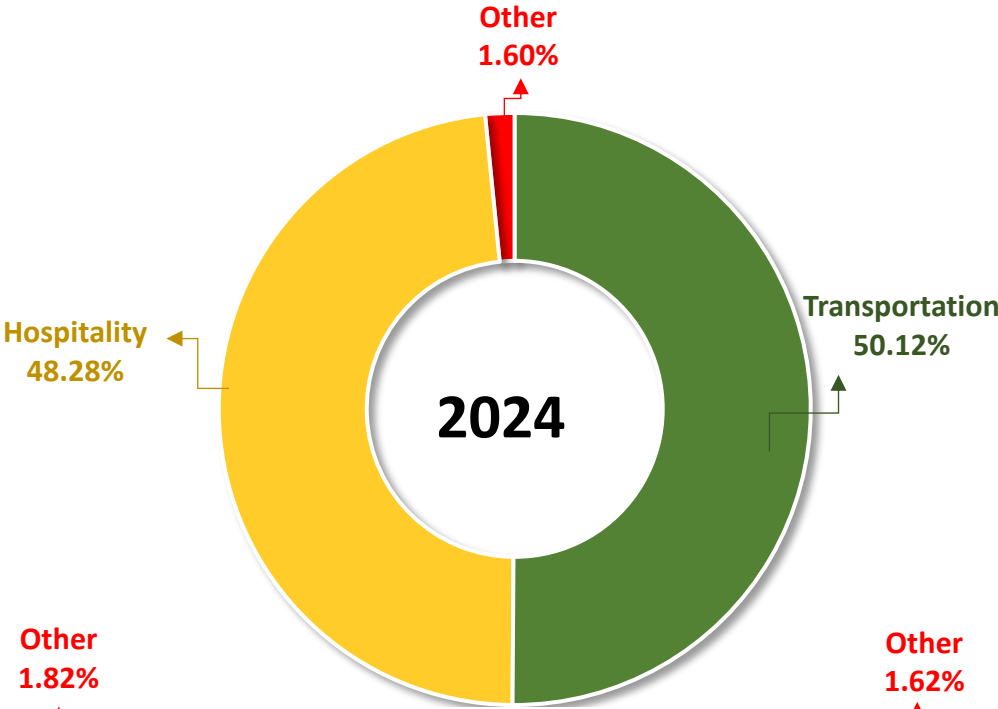
Items	2025 Q3	2024	2024 Q3
Operating Revenue	495,504	687,138	502,777
Operating Costs	348,326	492,531	369,887
Gross Profit	147,178	194,607	132,890
Operating Expenses	145,516	211,150	155,550
Operating Income (Loss)	1,662	(16,543)	(22,660)
Non-operating Income and Expenses	71,569	354,803	387,240
Income before Tax	73,231	338,260	364,580
income tax expense (benefit)	(9,543)	10,800	6,402
Net Income	82,774	327,460	358,178
Consolidated Net Income Attributed to Stockholders of the Company	72,803	310,373	346,905
EPS (Unit: NT\$) (Note)	0.39	1.64	1.84

Note: When calculating earnings per share, the impact of gratis allotment has been retroactively adjusted.

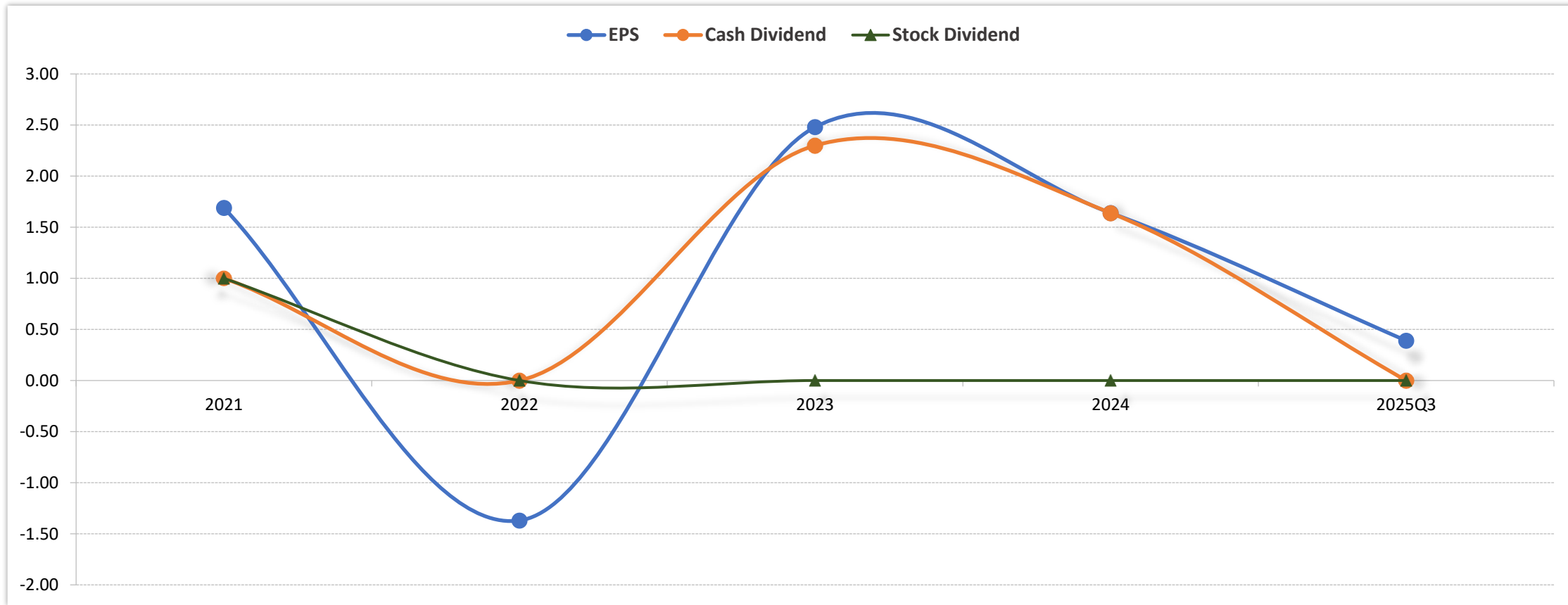
Operating Revenue

In Thousands of NTD

	2024	2025 Q3	2024 Q3
Transportation	344,379	234,098	258,000
Hospitality	331,720	252,411	236,635
Other	11,039	8,995	8,142
Total	687,138	495,504	502,777



Earnings and Dividends



Items/Year	2021	2022	2023	2024	2025 Q3
EPS	1.54	(1.37)	2.48	1.64	0.39
Cash Dividend	1	-	2.3	1.64	-
Stock Dividend	1	-	-	-	-



04 Future Outlook

TZE S

Future Outlook



Transportation Business

In terms of the transportation business, we will strive to consolidate existing customer relationships, stabilize operating income, and expand our business through alliances or integration to enhance market competitiveness.

We will actively explore new types of transportation services, such as logistics products and refrigerated container solutions, providing customers with more innovative and diversified options.



Construction & Development

In terms of construction and development, the TzeShin YunLi project in Zhunan, Miaoli is currently under construction and is expected to be completed by the end of this year. This year, the company acquired additional land in Zhunan, currently in planning and design, with the project expected to launch next year. In the future, the company will aim to develop and grow in a diversified way, such as creating quality housing that is well-received and reputed by the market through urban renewal projects.

Future Outlook



Tourism & Leisure

In the hospitality and leisure tourism sector, Miramar Garden Hotel will uphold high-quality service standards, continuously enhance brand value and management effectiveness, professionally assess market trends, and establish concrete and feasible business models. The hotel will strategically develop in the leisure and cultural tourism industry to achieve high operational efficiency and profitability.



Sustainable Development

By combining the cross-industry experience and resources of related companies, expanding the investment scope, continuously focusing on the development of the green industry and ESG-related initiatives, and strengthening sustainable competitiveness, a diversified business model is employed to create integrated group synergies and generate greater sustainable value and prosperity for future generations.

THANK YOU



志信國際股份有限公司
Tez Shin International Co., Ltd

Website address : www.tsgroup.com.tw

Search website : mops.twse.com.tw