

# TZE SHIN International Co. Ltd.

Stock code : 2611

## 2020 Investor Conference

---

追求卓越 永續經營  
誠信第一 服務至上

---



October 15<sup>th</sup>, 2020

# Disclaimer

---

This presentation is prepared according to the reviewed financial statements by CPA and the financial numbers hereby are based on IFRS, please refer to the published financial statements for full content. The presentation may contain forward-looking information and may differ materially from the actual results. TSI does not warranty as to the accuracy or completeness of such information and nor assume any undertaking further information becomes available or in light of changing circumstances. You shall not place undue reliance on any forward-looking information.

# Agenda

---

- 01 | Company Profile
- 02 | Operation Overview
- 03 | Financial Performance
- 04 | Future Outlook
- 05 | Q & A

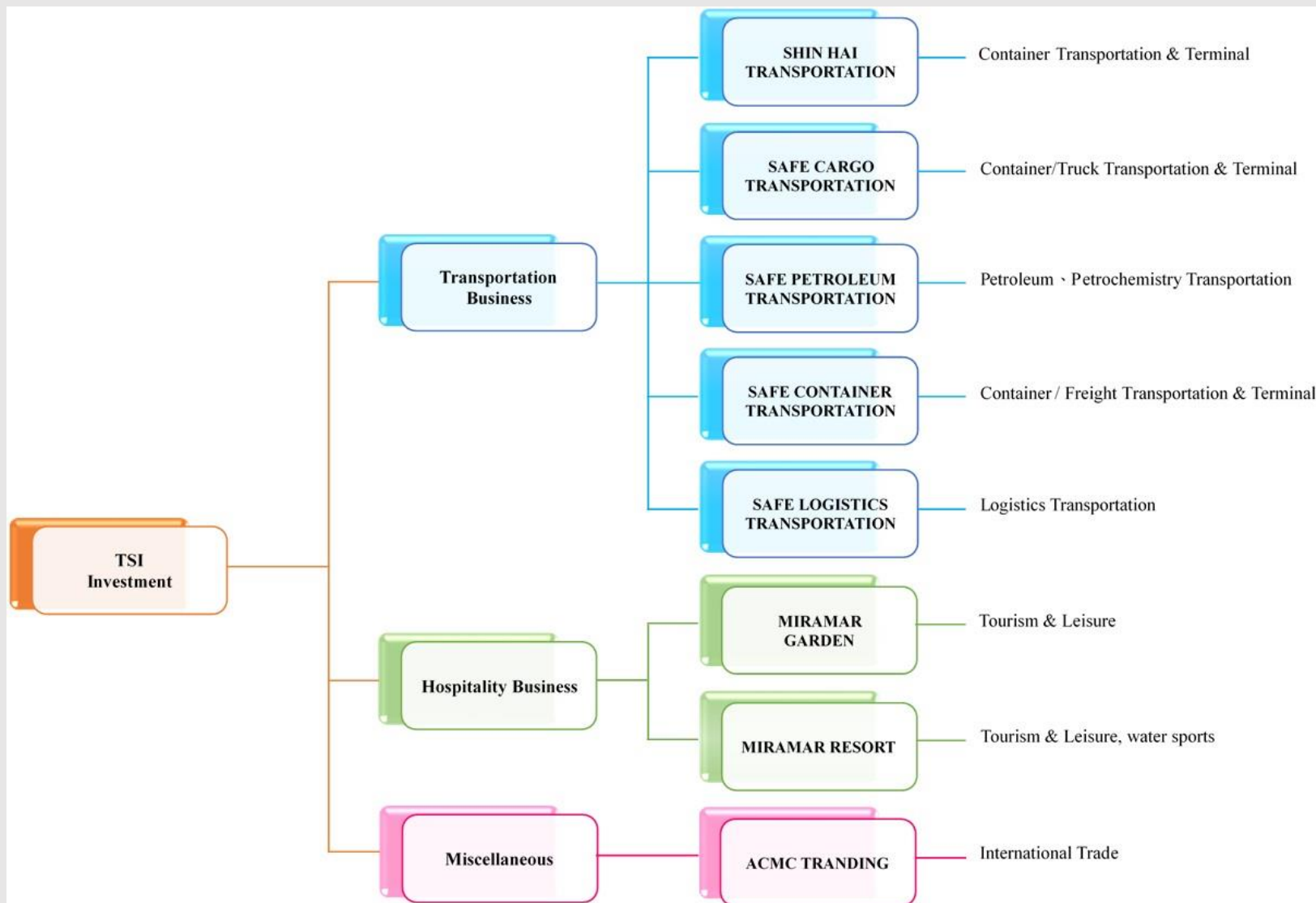


# 01 Company Profile

---

- Company Name : TZE SHIN International Co. Ltd.
- Established on : November 15<sup>th</sup>, 1973
- Date of Listing : October 28<sup>th</sup>, 1993
- Paid-in Capital : NTD\$ 1,729,942,470
- Business Segment : Truck & Container Transportation 、  
Construction 、 Tourism & Leisure 、  
Trading & Merchandise

# Business Scope



# Business Segments

Tze Shin established in 1973, initial main business by container and truck transportation; Along with the business development, in 1993 the stock went public, until today Tze Shin Group has been operating the business in accordance with its segment in truck & container transportation、construction、tourism and Leisure、trading and merchandise.

Trade & Merchandise



Container Transportation & Terminal



Construction



Hospitality



## ● 運輸業務

貨櫃運輸及貨運運輸  
(包含化學品、  
油品及物流等)

## ● 觀光休閒 & 旅館

台北美麗信花園酒店，  
結合歐式古典與現代摩登，  
以歐風優雅氣質著稱。



## ● 營建業務

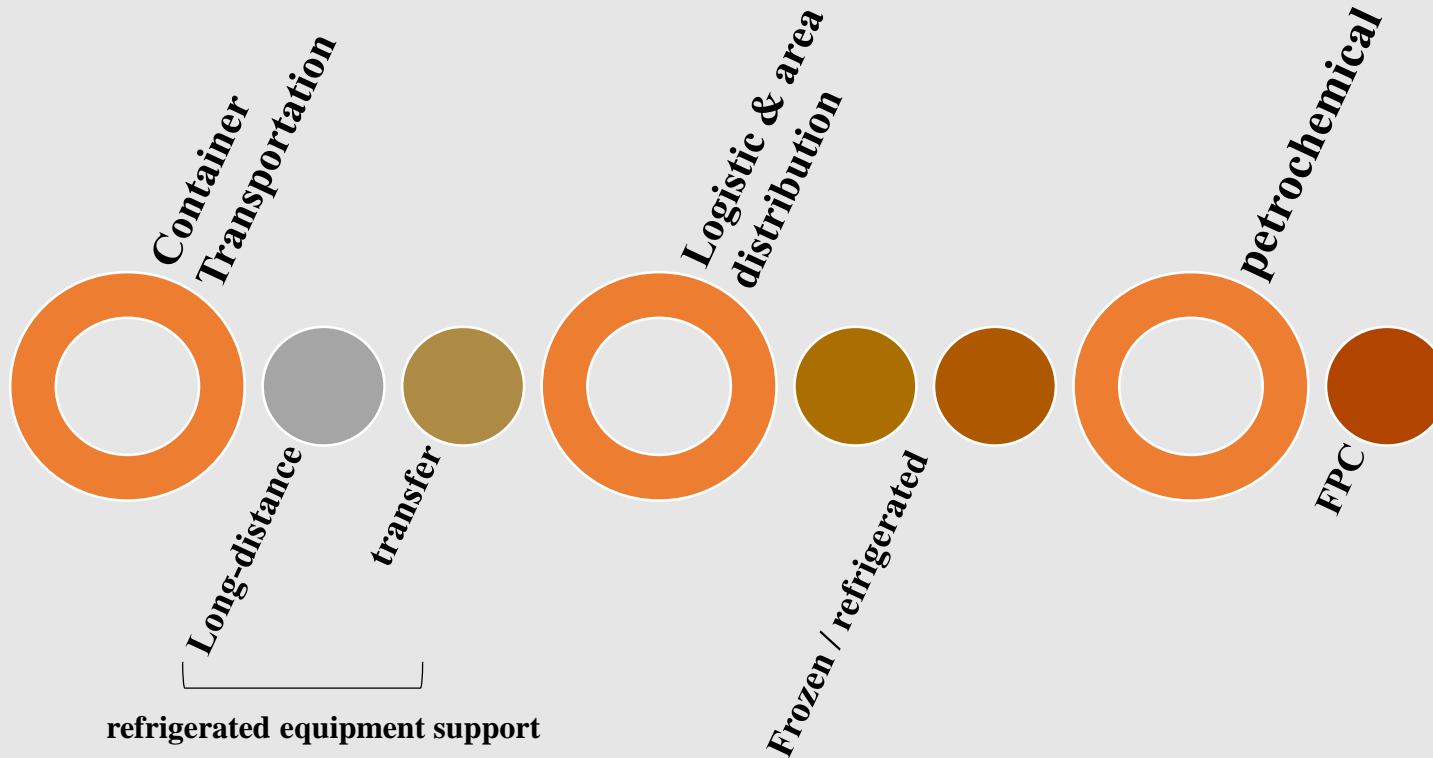
以住宅及廠辦大樓為主，  
主力於開發、規劃及興建等業務。

## ● 商品買賣

歐洲進口精品家電廚具  
設備代理銷售業務。



# Inland Fleets and Services

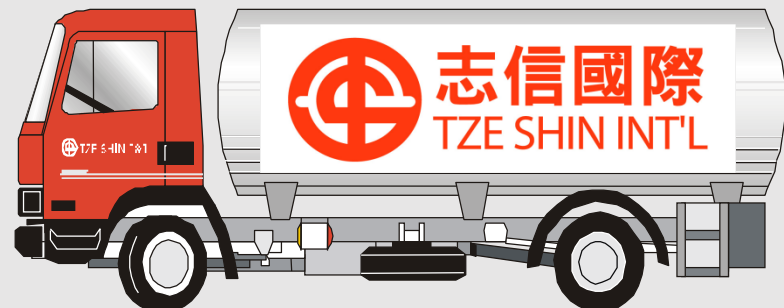


- Shin Hai Transportation: Container Transportation
- Safe Cargo Transportation: Container & Truck Transport
- Safe Petroleum Transportation: Oil Transport, Chemical Transport

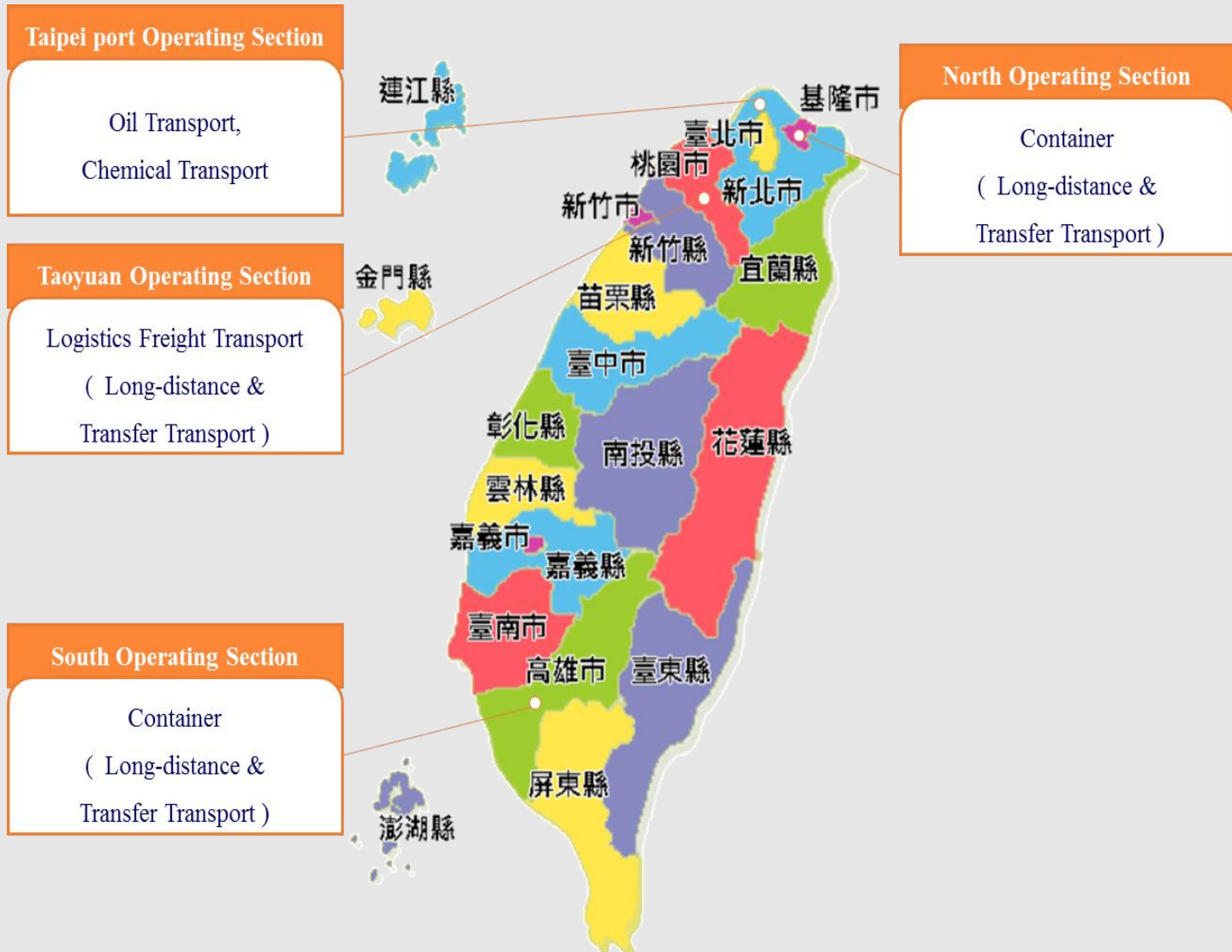
## 02 Operation Overview –Transportation Business

---

- Tze Shin transportation service includes domestic container 、 truck 、 bulk logistic and petrochemistry & damage goods.
- Tze Shin transportation fleets have FDA Food Business registration which are in line with FDA regulation.
- Tze Shin upholds the core value of safety and customers first to provide a fast, safe, and trustworthy service.

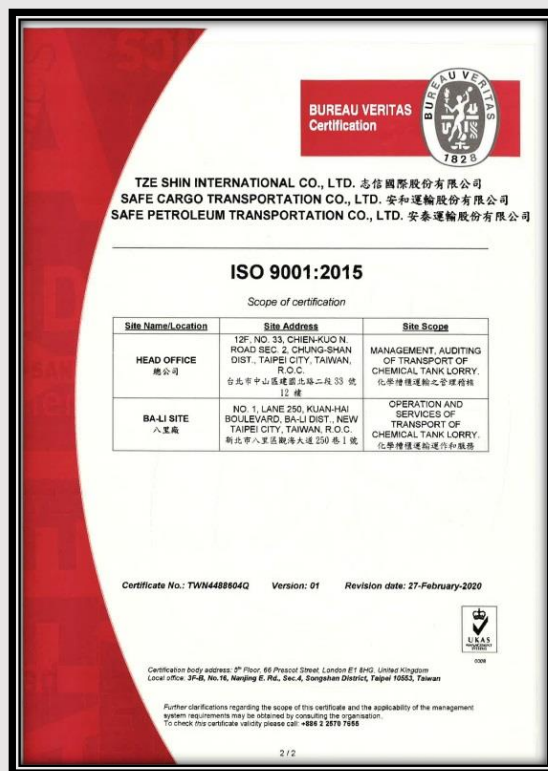


## 02 Operation Overview –Transportation Business



# Quality Certification & Commitment

- In spite of the competitive environment, we're still in line with our faith in the operation of an enterprise relies largely on the cultivation of talents together with the spirit of research and development. However, continual creativity and innovation result in our leading in the field, heading to an excellent and brilliant prospect for our company.



## ISO9001:2015

Certification body :  
Bureau Veritas Certification

Original certification date :  
Jan. 15 , 1993

Certification date :  
March 2020~March 2023



Factory



Condo/ apartment



Shopping center



The Construction department is committed to the development, planning for construction of factories, shopping malls and residential buildings; Mainly operating area are around of Taipei, Hsinchu and Taichung. In recent years, we have developed high-quality leisure and vacation residence communities to cater to the future market.



## 02 Operation Overview -Hospitality Business

Miramar Hotel Group built up as classic European style combined with modern sophistication, by providing professional service, global view and treating customer as family.

In addition to joint folklore festival and participate government promotional campaign to win international and domestic business recognition.



## 03 Financial performance — Balance Sheet(consolidated)

In Thousands of NTD

Item	30-Jun-20	31-Dec-19	Increased (reduced) amount	Change%
Currenet Assets	1,651,414	1,652,600	(1,186)	(0.07%)
Non-currenet Assets	3,011,622	3,035,629	(24,007)	(0.79%)
Total Assets	4,663,036	4,688,229	(25,193)	(0.54%)
Current Liabilities	1,187,094	1,155,629	31,465	2.72%
Non-current Liabilities	796,531	836,781	(40,250)	(4.81%)
Total Liabilities	1,983,625	1,992,410	(8,785)	(0.44%)
Capital Stock	1,729,942	1,759,942	(30,000)	(1.70%)
Additional paid-in Capital	17,749	7,254	10,495	144.68%
Retained Earnings	606,274	595,646	10,628	1.78%
Other Equity	78,578	72,754	5,824	8.01%
Noncontrolling Interests	246,868	260,223	(13,355)	(5.13%)
Total Equity	2,679,411	2,695,819	(16,408)	(0.61%)
Total Liabilities&Equity	4,663,036	4,688,229	(25,193)	(0.54%)

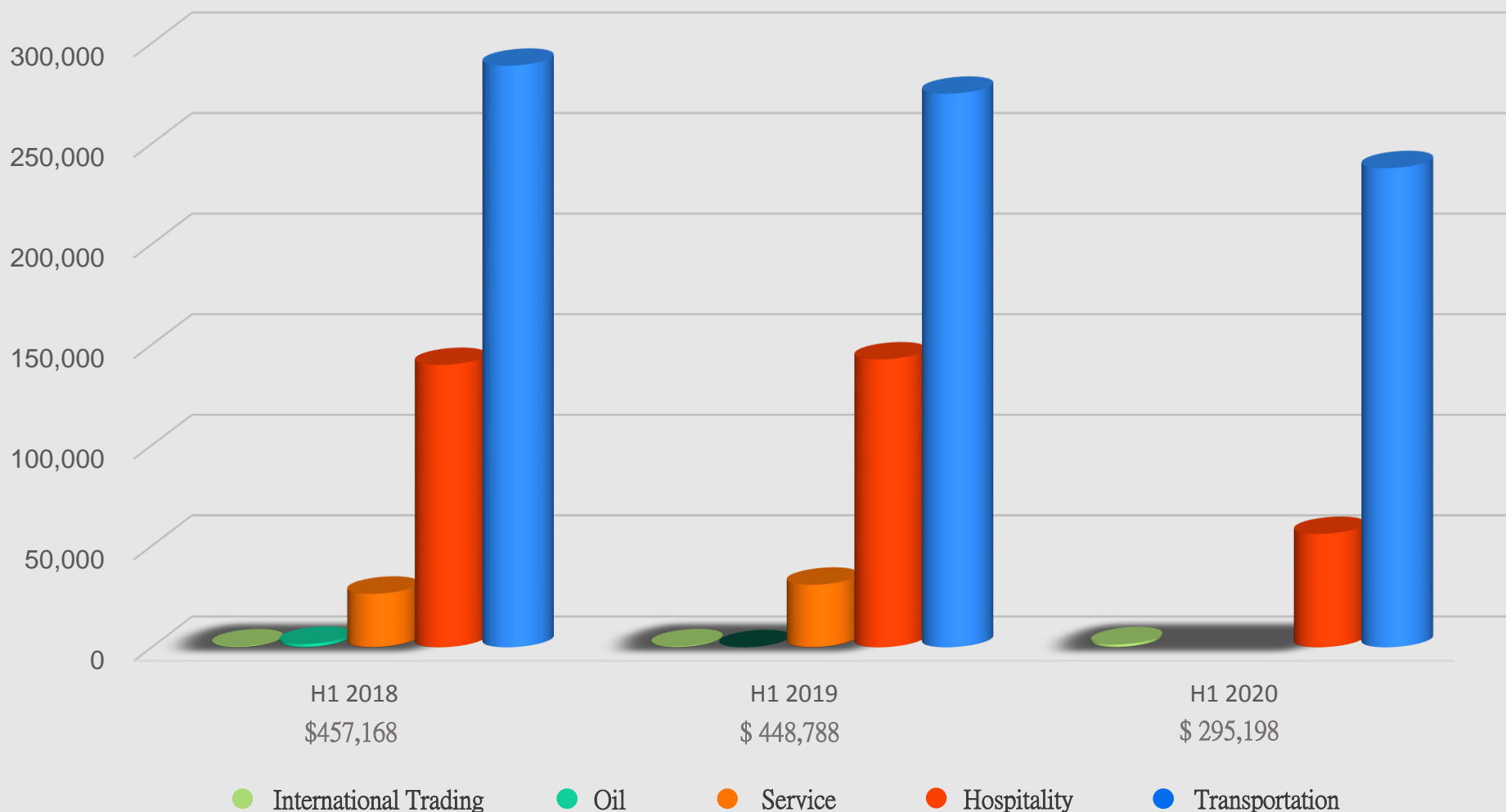
## 03 Income Statements(consolidated)

In Thousands of NTD

Item	H1 2020	H1 2019	Increased (reduced) amount	Change%
Operating Revenue	295,198	448,788	(153,590)	(34.22%)
Operating Costs	274,654	336,768	(62,114)	(18.44%)
Gross Profit	20,544	112,020	(91,476)	(81.66%)
Operating Expenses	84,298	104,821	(20,523)	(19.58%)
Operating Income(Loss)	(63,754)	7,199	(70,953)	(985.60%)
Non-operating Income and Expenses	52,207	45,670	6,537	14.31%
Income before Tax(Loss)	(11,547)	52,869	(64,416)	(121.84%)
income tax expense( benefit)	(2,657)	1,643	(4,300)	(261.72%)
Net Income(Loss)	(8,890)	51,226	(60,116)	(117.35%)
Consolidated Net Income Attributed to Stockholders of the Company	(407)	50,245	(50,652)	(100.81%)
EPS	0.00	0.28	(0.28)	(100.00%)

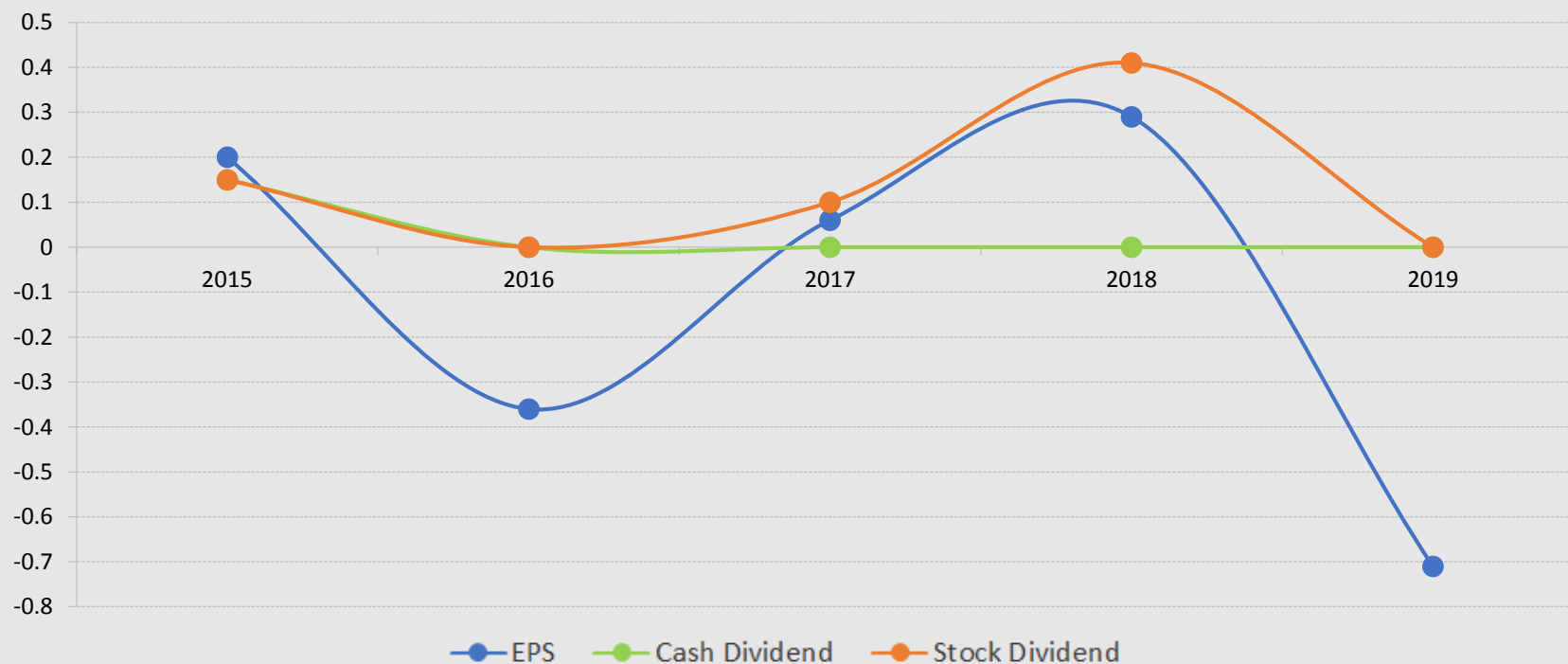
## 03 Main operating income

In Thousands of NTD



## 03 EPS & Dividend

Items	2015	2016	2017	2018	2019
EPS	0.20	(0.36)	0.06	0.29	(0.71)
Cash Dividend	0.15	-	0.10	0.41	-
Stock Dividend	0.15	-	-	-	-



## 04 Future Outlook

- 
- Impact of COVID-19 pandemic, The global economy shrinks . In our transportation business is to strengthen the container and to integrate resources to improve operating efficiency and to save cost in order to meet customer satisfaction. In addition to maintain business relation with clients by strategic alliance to extend business scope and competitive advantages.
  - For the construction developing business plan is committed to develop and focus on factories, shopping malls, and residential buildings to achieving long-term sustainability.
  - Diversifying into hospitality industry, by the Miramar Hotel Group brand value and management skills to provide better services and know-how for further business success.
  - By combining the cross-industry experience and resources of related companies , committed to expanding investment scope , and evaluate domestic and overseas investment projects , in order to achieve a diversified business model to create group synergy .

# Thank You

查詢網址:<http://mops.twse.com.tw>

公司網址:<http://www.tsgroup.com.tw>

志信國際股份有限公司 | TZE SHIN International Co. Ltd.