

Tze Shin transportation services include domestic container, truck transportation & terminal, petrochemistry and dangerous goods transport, as well as bulk logistics etc.



TZE SHIN International Co., Ltd.

2024 Investor Conference

Disclaimer

- This presentation is prepared according to the reviewed financial Statements by CPA and the financial numbers hereby are based on Regulations Governing the Preparation of Financial Reports by Securities and IFRS, please refer to the published financial Statements for full content.
- The presentation may contain forward-looking information and may differ materially from the actual results.
- TSI does not warranty as to the accuracy or completeness of such information and nor assume any undertaking further information becomes available or in light of changing circumstances. You shall not place undue reliance on any forward-looking information.



TZE SHIN INT'L

Agenda

01

**Company
Profile**

02

**Operation
Overview**

03

**Financial
Performance**

04

**Future
Outlook**



01 Company Profile

TZE S...NT'

Company profile



志信國際股份有限公司
Tze Shin International Co., Ltd.



Established on :

November 15th, 1973



Date of Listing :

October 28th, 1993



Paid-in Capital :

NTD\$ 1,890,022,720



Business Segment :

Truck & Container Transportation

Construction

Tourism & Leisure

Business philosophy

In search of excellence and everlasting management
Sincerity and customer service oriented



“

Determine

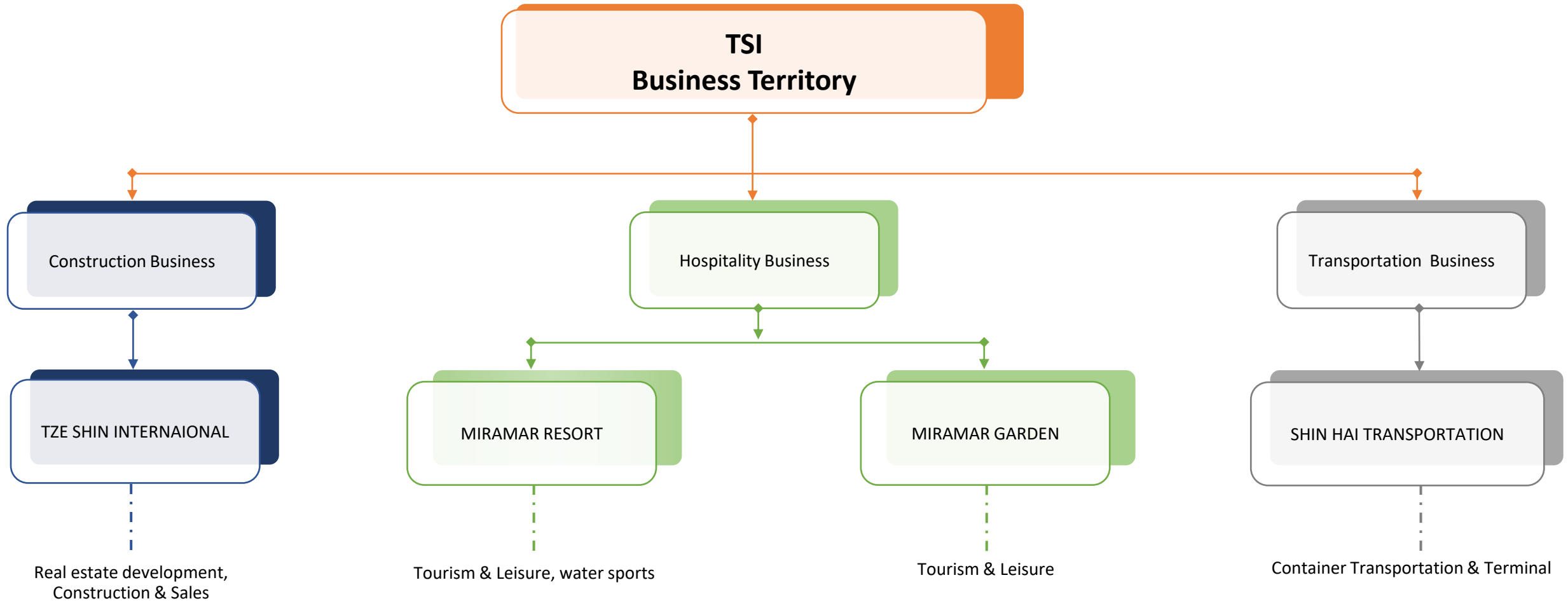
- Pursuit of excellence, Sustainable development

Integrity

- Integrity first, Service-oriented

”

Core Business



TZE SHIN INT'L



02 Operation Overview

TZE SHIN INT'L



Business Segments

The Tze-Shin Company mainly focuses on container transportation, and the business scope spans construction, tourism and leisure, commercial commodity trading, and etc.

The company adheres to the business philosophy of pursuing excellence and sustainability, and is committed to achieving the triple-win goal of customer satisfaction, employee satisfaction and shareholder satisfaction.

Operation Overview – Transportation Business

VALUE
01



The Tze-Shin transportation team's services include long-distance cargo transport across the province, portside container haulage and oil tank container transportation.

VALUE
02



We have set up transportation bases in the northern, central and southern provinces to provide more economical and timely transportation services. Our high-level and detailed quality management system and reduced operating costs will bring the greatest benefits to our customers.

VALUE
03



Tze Shin upholds the core value of safety and customers first to provide a fast, safe, and trustworthy service.

Inland Fleets and Services



Image from Pixabay



Long-distance transshipment

Provide long-distance container haulage between Keelung, Taoyuan, Taichung, Kaohsiung, etc.



Shipperside transshipment

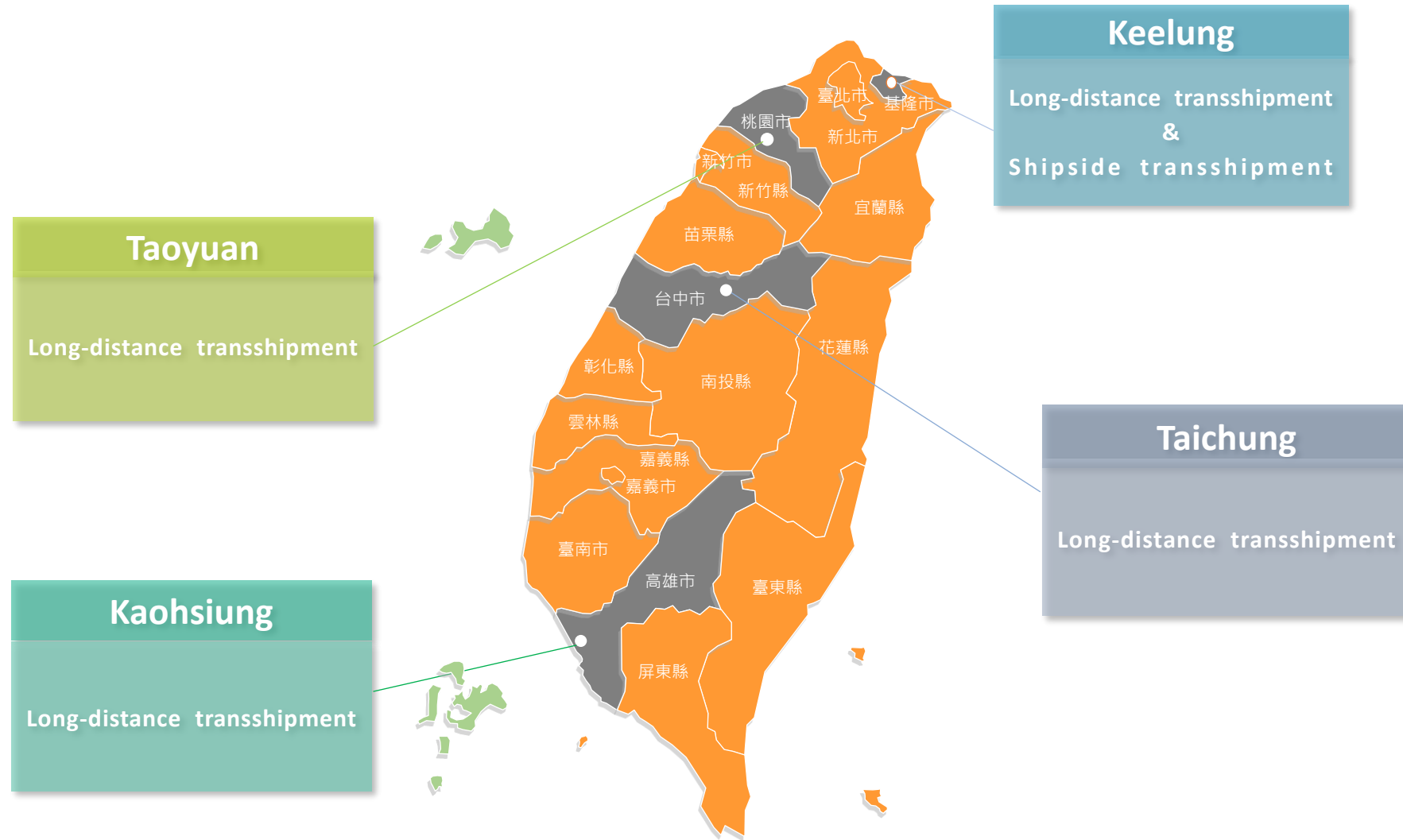
Provide container haulage between shipperside and inland container yards.



Transportation of Oil container

Provide oil container haulage between container yards.

Operation Overview –Transportation Business





Operation Overview - Construction Business



Factory



Condo/
apartment



Shopping
center



Leisure
residence

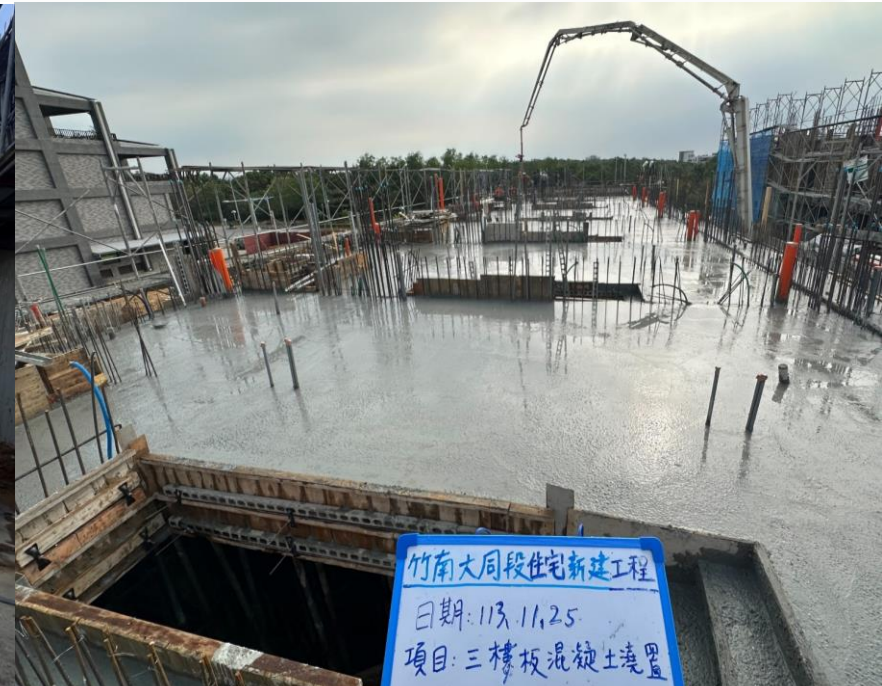
The Construction department is committed to the development, planning for construction of factories, shopping malls and residential buildings; Mainly operating area are around of Taipei, Hsinchu and Taichung. In recent years, we have developed high-quality leisure and vacation residence communities to cater to the future market.

Operation Overview - Construction Business

“TzeShin Yuntong” is located in Zhunan Township, Miaoli County, with a site area of approximately 450 ping (about 1,488 square meters). The development plans for 16 villa-style homes.

The site is situated at the intersection of Kezhuan 7th Road and Gongyi Road, next to Datong High School, and is directly in front of TSMC's first row of buildings. The area directly in front of the site features a linear park, and the community benefits from well-established living amenities.

Construction Progress: Completion of the 3rd floor slab.



Operation Overview – Hospitality Business

Miramar Hotel Group built up as classic European style combined with modern sophistication, by providing professional service, global view and treating customer as family.

In addition to joint folklore festival and participate government promotional campaign to win international and domestic business recognition.



Operation Overview – Hospitality Business



Diversified software and hardware facilities services

Provide comprehensive and complete service requirements, covering rich and exquisite delicacies, well-equipped fitness clubs, first-class business meeting facilities. Additionally, we provide multi-functional services such as parking, laundry, in-room dining, business secretarial services, babysitting, and private butler services. Our services are designed to meet the diverse needs of both leisure and vacation travelers as well as business professionals.



Operation Overview – Hospitality Business

- The Miramar Garden Hotel initiated a comprehensive five-month renovation project in November 2022. It reopened with brand new luxurious guest rooms on January 18, 2023, to welcome guests.
- In 2023, the annual housing rate was 73%. By the first three quarters of 2024, the housing rate had already reached a high level, breaking the operational performance record since the opening.

Operation Overview – Hospitality Business

The Garden Terrace has been transformed into a romantic European-style garden steakhouse, offering a seafood semi-buffet dining experience. With a dining space featuring a soaring height of 3.7 meters, guests can enjoy the rare greenery and beautiful scenery of Taipei city while dining.

The Miramar Garden Hotel is committed to providing heartfelt service to solidify its existing customer base and actively adopts innovative marketing strategies to attract new customers. With the principle of "service first, customer foremost," the hotel aims to provide customers with services that are "considerate, warm, and comfortable."





03 Financial Performance

TZE SHIN INT'L

Balance Sheet(consolidated)

In Thousands of NTD

Items	2024.09.30	2023.12.31	2023.09.30
Current assets	2,873,440	2,553,311	2,309,453
Non-current assets	1,620,643	1,646,166	1,695,645
Total assets	4,494,083	4,199,477	4,005,098
Current liabilities	436,173	401,479	466,053
Non-current liabilities	807,421	558,973	555,286
Total liabilities	1,243,594	960,452	1,021,339
Total equity of the owner of the Company	3,022,776	3,001,080	2,753,370
Non-controlling interests	227,713	237,945	230,389
Total equity	3,250,489	3,239,025	2,983,759
Total Liabilities and Equity	4,494,083	4,199,477	4,005,098

Income Statements(consolidated)

In Thousands of NTD

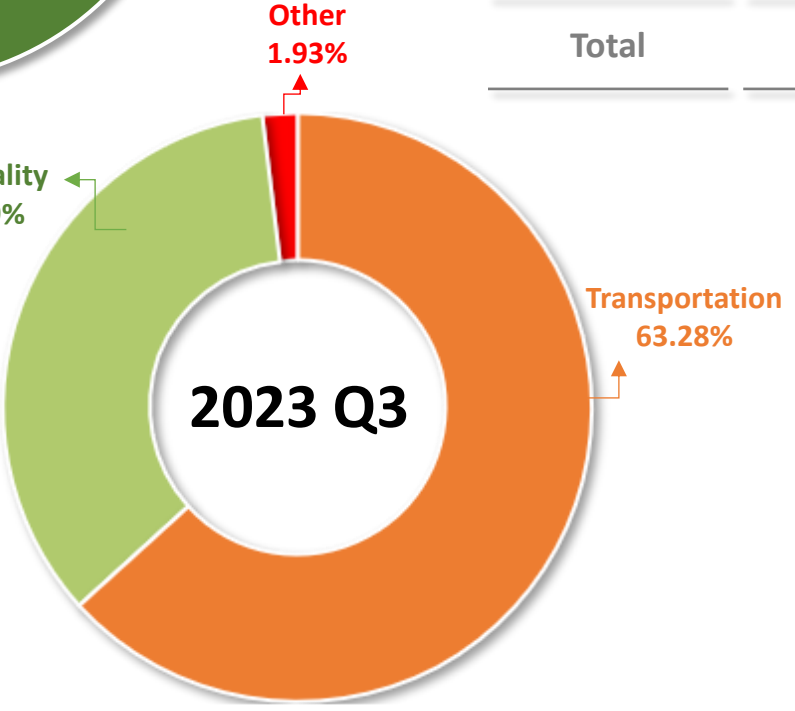
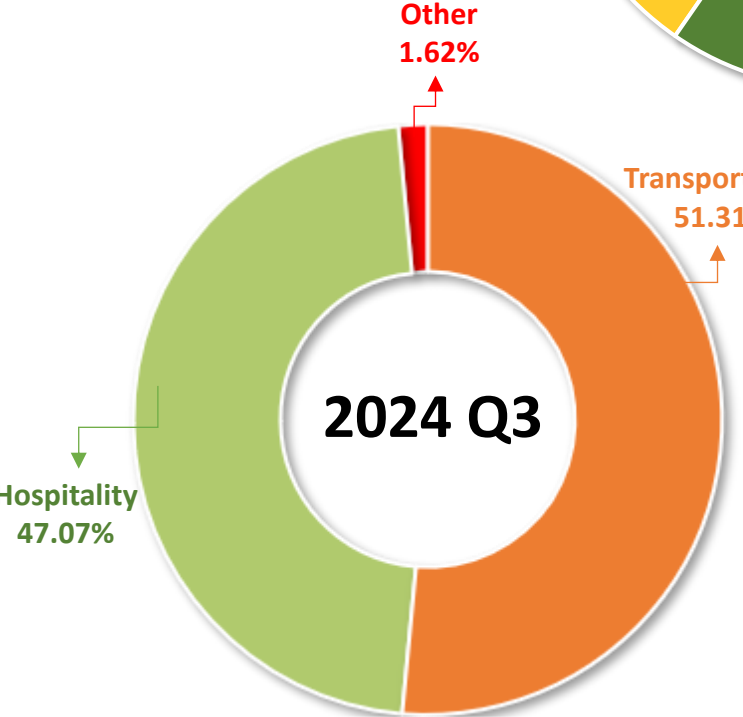
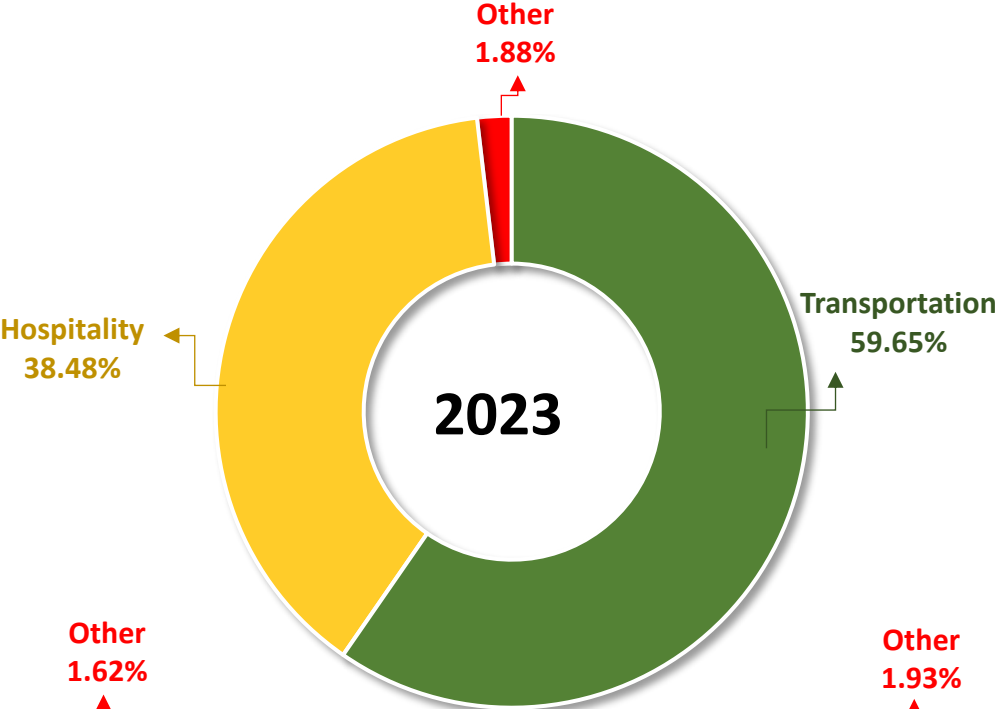
Items	2024 Q3	2023	2023 Q3
Operating Revenue	502,777	617,327	449,477
Operating Costs	369,887	471,448	352,779
Gross Profit	132,890	145,879	96,698
Operating Expenses	155,550	193,826	128,956
Operating Income (Loss)	(22,660)	(47,947)	(32,258)
Non-operating Income and Expenses	387,240	527,847	293,092
Income before Tax	364,580	479,900	260,834
income tax expense(benefit)	6,402	4,069	1,134
Net Income	358,178	475,831	259,700
Consolidated Net Income Attributed to Stockholders of the Company	346,905	467,964	258,253
EPS(Unit: NT\$) (Note)	1.84	2.48	1.37

Note: When calculating earnings per share, the impact of gratis allotment has been retroactively adjusted.

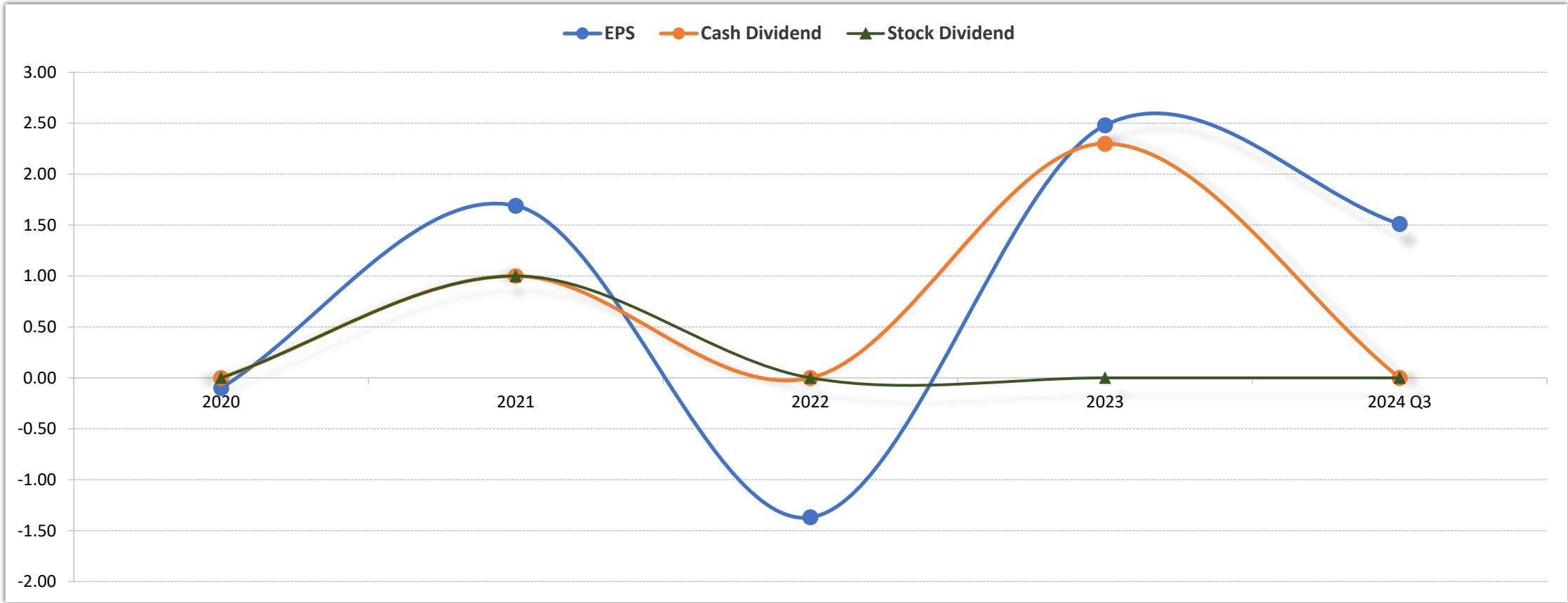
Core Business

In Thousands of NTD

	2023	2024 Q3	2023 Q3
Transportation	368,207	258,000	284,415
Hospitality	237,533	236,635	156,366
Other	11,587	8,142	8,696
Total	617,327	502,777	449,477



OPERATING Results



Items/Year	2020	2021	2022	2023	2024 Q3
EPS	(0.10)	1.54	(1.37)	2.48	1.84
Cash Dividend	-	1	-	2.3	-
Stock Dividend	-	1	-	-	-



04 Future Outlook

TZE S

Future Outlook



Transportation Business

In terms of the transportation business, we will strive to consolidate existing customer relationships, stabilize operating income, expand business through alliances or integration, and actively expand new types of transportation service opportunities such as commercial logistics and freezer container shipments.



Construction & Development

In terms of construction and development, we carefully evaluate market trends, professionally evaluate development sites and operating areas, and aim to create stable and long-term development. In the future, the company will aim to develop and grow in a diversified way, such as creating quality housing that is well-received and reputed by the market through urban renewal projects.

Future Outlook



Tourism & Leisure

Diversifying into hospitality industry, by the Miramar Hotel Group brand value and management skills to provide better services and know-how for further business success.



Sustainable Development

By combining the cross-industry experience and resources of related companies , committed to expanding investment scope , and evaluate domestic and overseas investment projects , especially focus in green industry and ESG related , in order to achieve a diversified business model to create group synergy .

THANK YOU



志信國際股份有限公司
Tez Shin International Co., Ltd

 Website address : www.tsgroup.com.tw

 Search website : mops.twse.com.tw