

志 信

Tze Shin transportation service include domestic container 、 truck transportation & terminal 、 petrochemistry and dangerous goods transport as well as bulk logistic etc.



TZE SHIN International Co. Ltd.

2023 Investor Conference

<https://www.tsgroup.com.tw/>

Stock code : 2611

Disclaimer

This presentation is prepared according to the reviewed financial statements by CPA and the financial numbers hereby are based on IFRS, please refer to the published financial statements for full content.

The presentation may contain forward-looking information and may differ materially from the actual results.

TSI does not warranty as to the accuracy or completeness of such information and nor assume any undertaking further information becomes available or in light of changing circumstances. You shall not place undue reliance on any forward-looking information.



<https://www.tsgroup.com.tw/>

Stock code : 2611

Agenda



01 | Company Profile



02 | Operation Overview



03 | Financial Performance



04 | Future Outlook



01

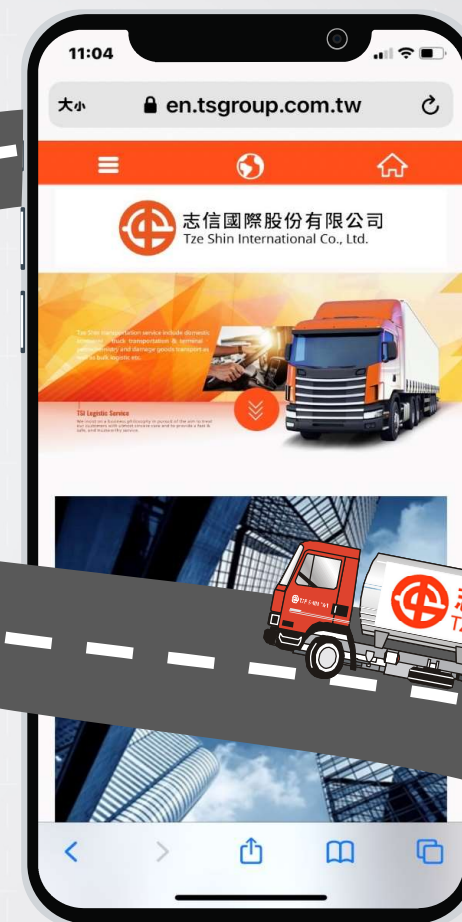


Company Profile

TZE SHIN INT'L

Company Profile

- Company Name : TZE SHIN International Co. Ltd.
- Established on : November 15th,1973
- Date of Listing : October 28th,1993
- Paid-in Capital : NTD\$ 1,890,022,720
- Business Segment : Truck & Container
Transportation 、 Construction 、
Tourism & Leisure 、 Trading



<https://www.tsgroup.com.tw/>

Stock code : 2611

4

Business philosophy

In search of excellence and everlasting management

Sincerity and customer service oriented

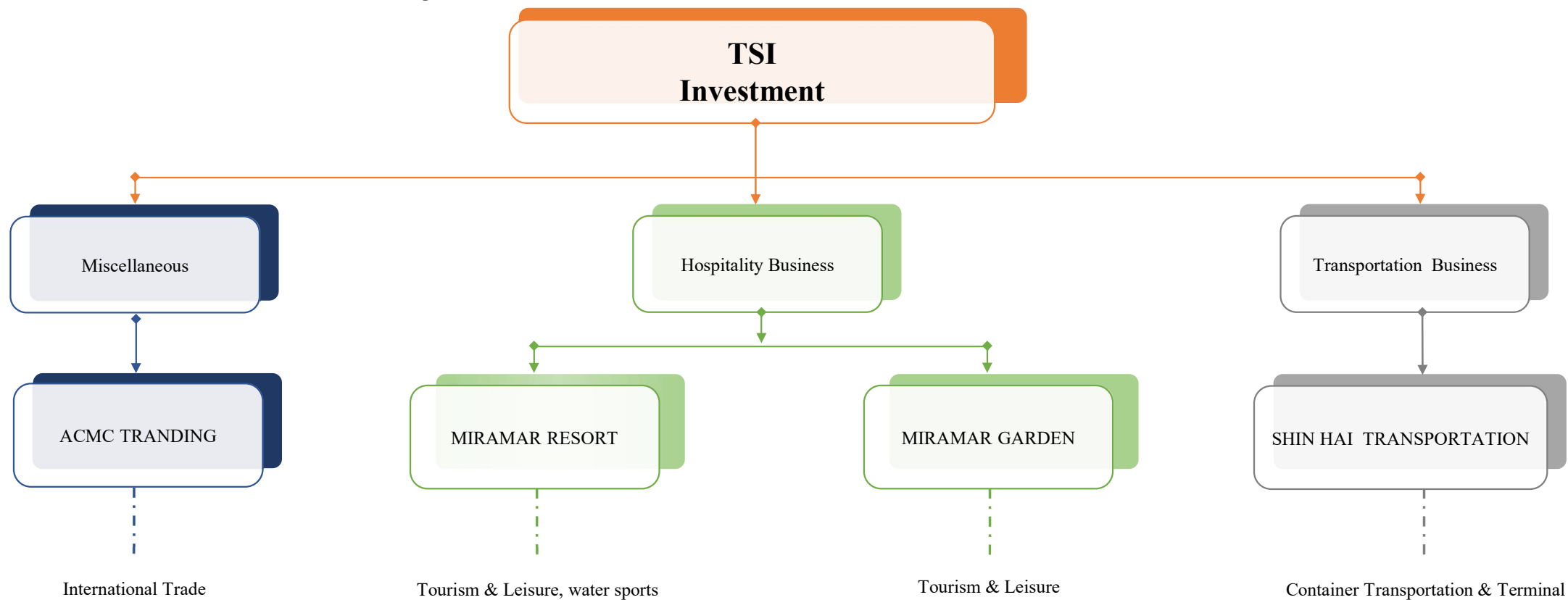
Determine -

Pursuit of excellence/
Sustainable development

Integrity -

Integrity first/Service-oriented

Business Scope



TZE SHIN INT'L



02



Operation Overview

TZE SHIN INT'L

Business Segments



The Tze-Shin Company mainly focuses on container transportation, and the business scope spans construction, tourism and leisure, commercial commodity trading, and etc.

The company adheres to the business philosophy of pursuing excellence and sustainability, and is committed to achieving the triple-win goal of customer satisfaction, employee satisfaction and shareholder satisfaction.



Operation Overview

– Transportation Business



The Tze-Shin transportation team's services include long-distance cargo transport across the province, portside container haulage and oil tank container transportation.



We have set up transportation bases in the northern, central and southern provinces to provide more economical and timely transportation services. Our high-level and detailed quality management system and reduced operating costs will bring the greatest benefits to our customers.



Tze Shin upholds the core value of safety and customers first to provide a fast, safe, and trustworthy service.

TZE SHIN INT'L

Inland Fleets and Services



Long-distance transshipment

Provide long-distance container haulage between Keelung, Taoyuan, Taichung, Kaohsiung, etc.



Shipside transshipment

Provide container haulage between shipside and inland container yards.



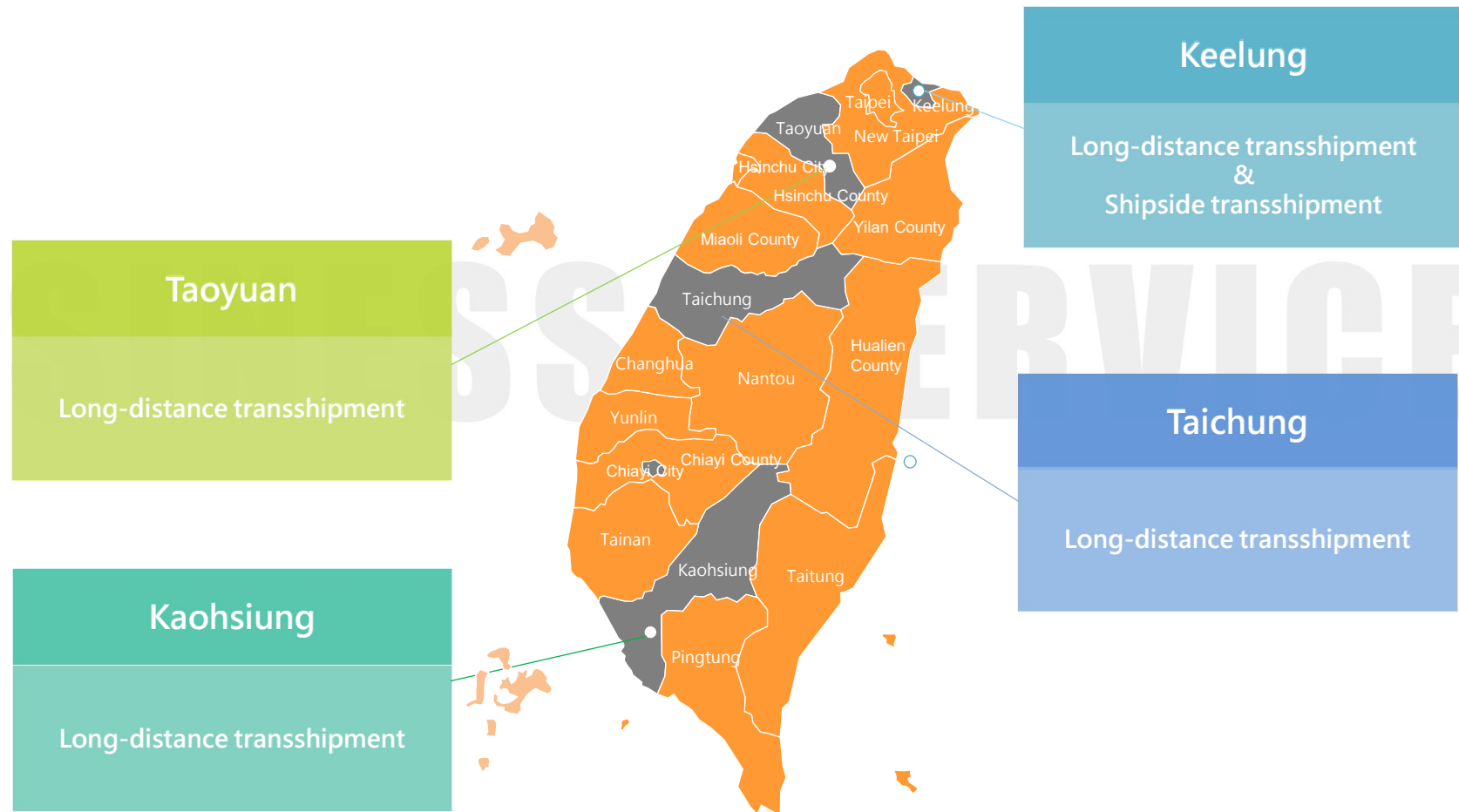
Transportation of Oil container

Provide oil container haulage between container yards.

BUSINESS SERVICE

Operation Overview

–Transportation Business



Operation Overview

-Construction Business



Factory



Condo/
apartment



Shopping
center



Leisure
residence

The Construction department is committed to the development, planning for construction of factories, shopping malls and residential buildings; Mainly operating area are around of Taipei, Hsinchu and Taichung. In recent years, we have developed high-quality leisure and vacation residence communities to cater to the future market.



Operation Overview -Construction Business

On November 28, 2022, the company signed the joint construction project contract of Wenshan District of Taipei City. The site is about 4,070m², and the plan is to construct a multi-dwelling complex that is 18 levels above ground and 3 levels below ground.



Operation Overview -Construction Business

On December 29, 2022, the company signed the joint construction project contract of Wanhua district of Taipei City . The site is about 4,335m², and the plan is to construct a multi-dwelling complex that is 18 levels above ground and 3 levels below ground.



Operation Overview

-Hospitality Business

Miramar Hotel Group built up as classic European style combined with modern sophistication, by providing professional service, global view and treating customer as family.

In addition to joint folklore festival and participate government promotional campaign to win international and domestic business recognition.



MIRAMAR GARDEN TAIPEI

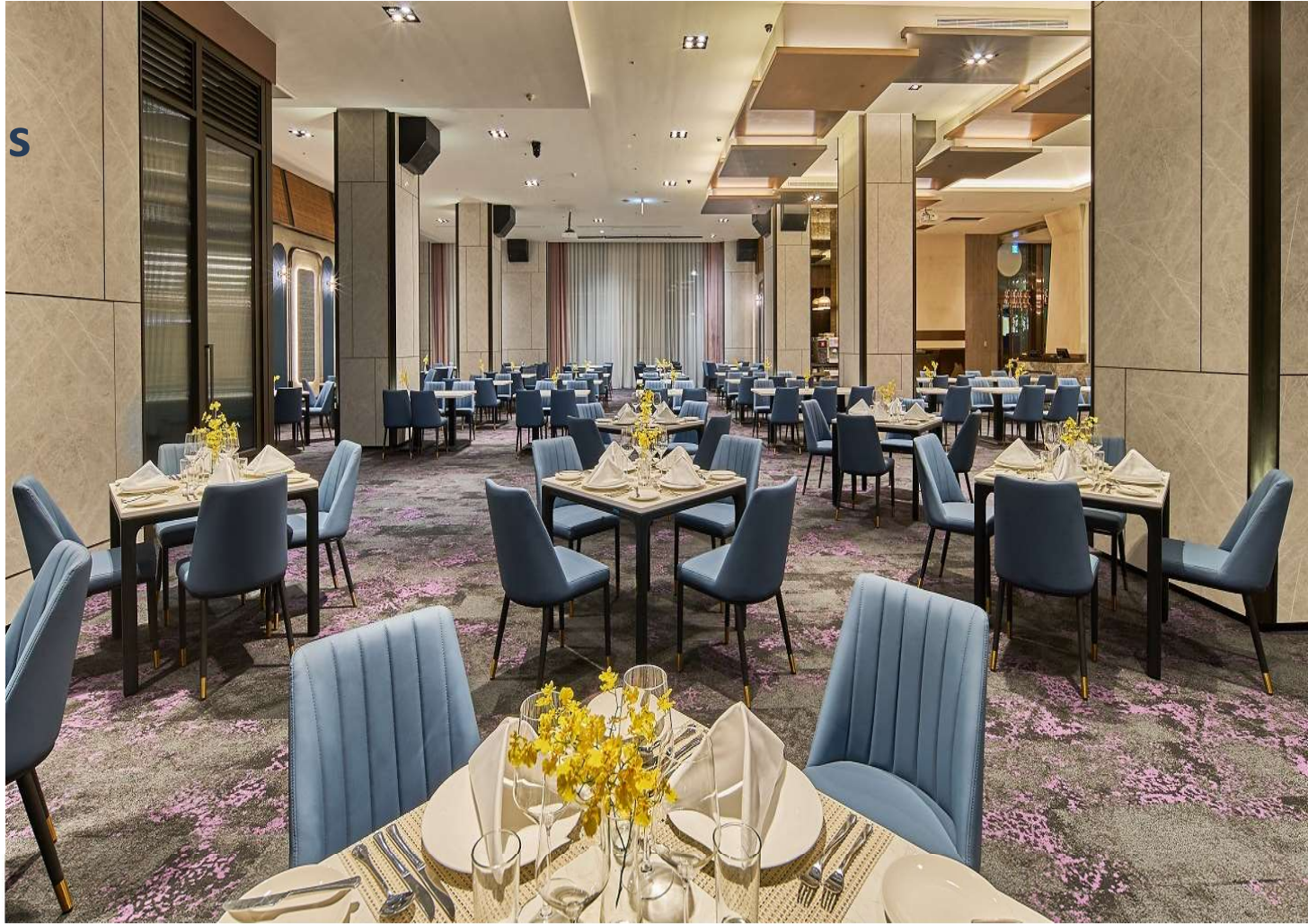


Diversified software and hardware facilities services

Provide comprehensive and complete service requirements, covering rich and exquisite delicacies, well-equipped fitness clubs, first-class business meeting facilities, as well as parking, laundry, in-room dining, business secretary multi-functional services, babysitting services and more in 2013 Private butler services, etc., are in meeting the leisure enjoyment of holiday travelers and the perfect functional needs of business people.

Operation Overview -Hospitality Business

From November 2022 to early January 2023, the Miramar Garden Hotel will carry out full building maintenance and updates as well as renovation to its guest rooms and restaurants. the hotel reopen on January 18, 2023. Miramar Garden Hotel will work to consolidate its existing customer base through diligent and attentive services, as well as implementing an active and innovative marketing model to attract new customers. Putting customers first and ensuring that we provide them with a caring, warm and thoughtful service is our goal and philosophy.



TZE SHIN INT'L

03



Financial Performance

TZE SHIN INT'L

Income Statements(consolidated)

In Thousands of NTD

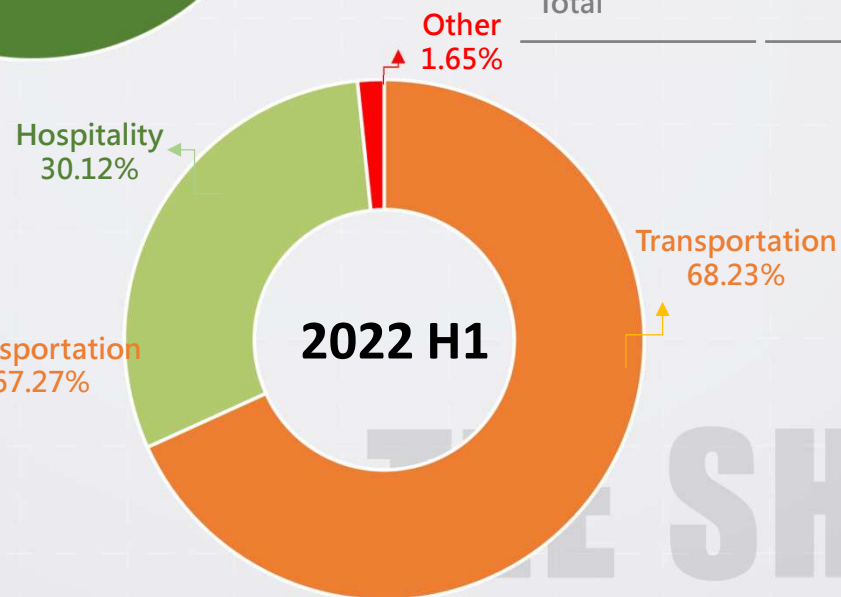
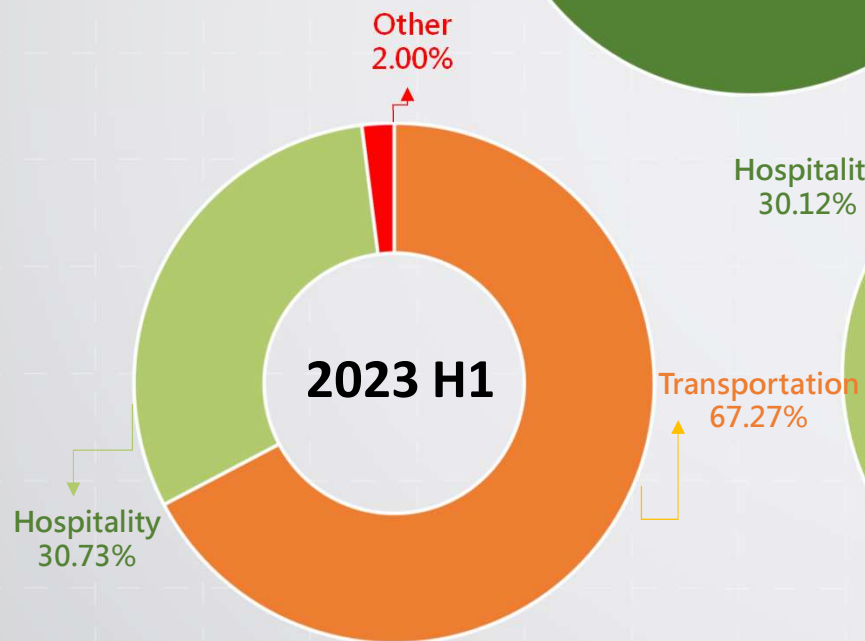
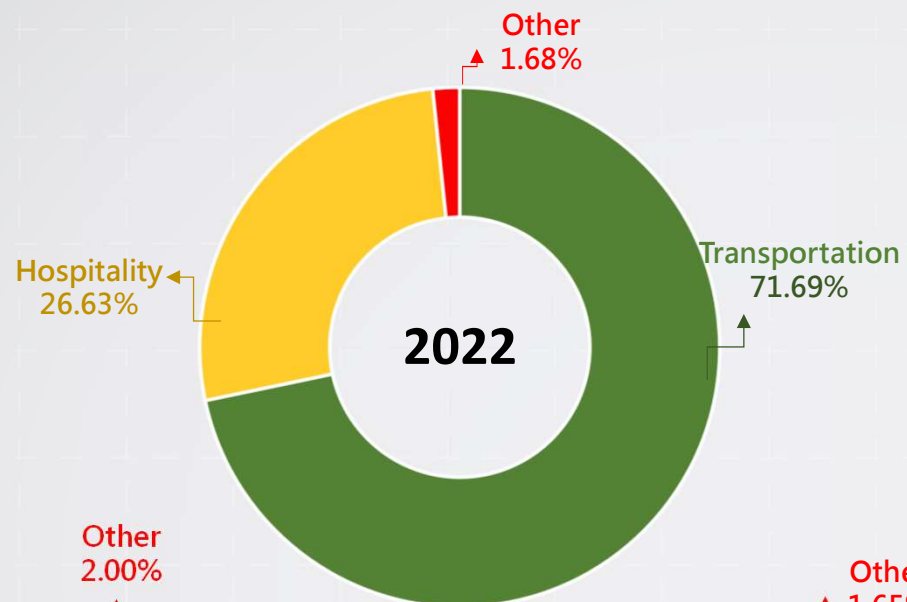
Items	2023.06.30	2022.12.31	2022.06.30
Current assets	2,204,713	1,954,950	2,243,363
Non-current assets	1,695,880	1,638,897	1,487,909
Total assets	3,900,593	3,593,847	3,731,272
Current liabilities	546,642	326,628	500,496
Non-current liabilities	560,598	553,054	561,991
Total liabilities	1,107,240	879,682	1,062,487
Total equity of the owner of the Company	2,566,545	2,473,456	2,431,437
Non-controlling interests	226,808	240,709	237,348
Total equity	2,793,353	2,714,165	2,668,785
Total Liabilities and Equity	3,900,593	3,593,847	3,731,272

Income Statements(consolidated)

In Thousands of NTD

Items	2023 H1	2022	2022 H1
Operating Revenue	289,427	729,967	409,793
Operating Costs	238,156	571,803	306,596
Gross Profit	51,271	158,164	103,197
Operating Expenses	80,053	174,067	85,882
Operating Income (Loss)	(28,782)	(15,903)	17,315
Non-operating Income and Expenses	100,167	(224,625)	(328,401)
Income before Tax	71,385	(240,528)	(311,086)
income tax expense(benefit)	(1,876)	4,634	6,271
Net Income	73,261	(245,162)	(317,357)
Consolidated Net Income Attributed to Stockholders of the Company	75,596	(259,843)	(329,765)
EPS(Unit: NT\$) (Note)	0.4	(1.37)	(1.74)

Note:When calculating earnings per share, the impact of gratis allotment has been retroactively adjusted.

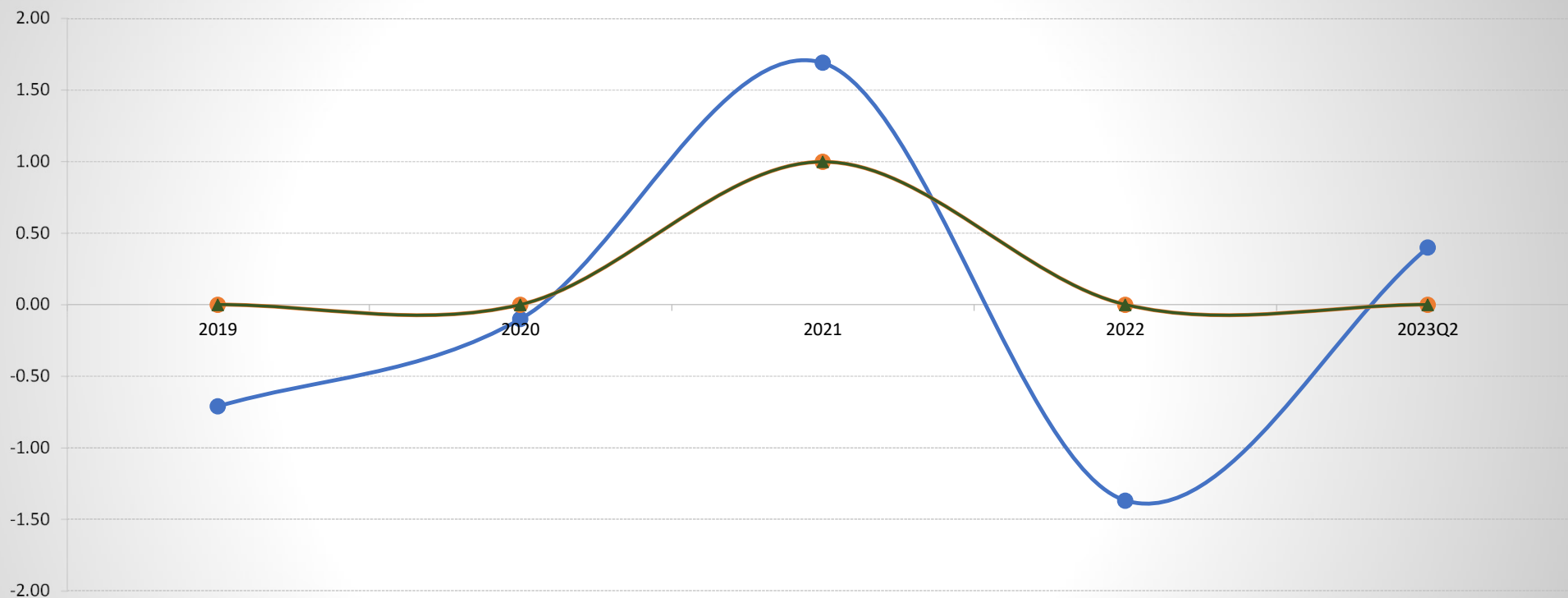


Core Business

In Thousands of NTD

	2022	2023 H1	2022 H1
Transportation	523,305	194,694	279,583
Hospitality	194,415	88,934	123,445
Other	12,247	5,799	6,765
Total	729,967	289,427	409,793

OPERATING Results



Item/Year	2019	2020	2021	2022	2023 H1
EPS	(0.71)	(0.10)	1.54	(1.37)	0.40
Cash Dividend	-	-	1	-	-
Stock Dividend	-	-	1	-	-

04



Future Outlook

TZE SHIN INT'L

Future Outlook

- In terms of the transportation business, we will strive to consolidate existing customer relationships, stabilize operating income, expand business through alliances or integration, and actively expand new types of transportation service opportunities such as commercial logistics and freezer container shipments.
- In terms of construction and development, we carefully evaluate market trends, professionally evaluate development sites and operating areas, and aim to create stable and long-term development. In the future, the company will aim to develop and grow in a diversified way, such as creating quality housing that is well-received and reputed by the market through urban renewal projects.
- Diversifying into hospitality industry, by the Miramar Hotel Group brand value and management skills to provide better services and know-how for further business success.
- By combining the cross-industry experience and resources of related companies , committed to expanding investment scope , and evaluate domestic and overseas investment projects , especially focus in green industry and ESG related , in order to achieve a diversified business model to create group synergy .

 **TZE SHIN INTERNATIONAL CO., LTD.**

website address : <https://www.tsgroup.com.tw>

search website : <https://mops.twse.com.tw>



THANK YOU

TZE SHIN INT'L