

Tze Shin transportation service include domestic container 、 truck transportation & terminal 、 petrochemistry and dangerous goods transport as well as bulk logistic etc.



TZE SHIN International Co. Ltd.

2022 Investor Conference

<https://www.tsgroup.com.tw/>

Stock code : 2611

Disclaimer

This presentation is prepared according to the reviewed financial statements by CPA and the financial numbers hereby are based on IFRS, please refer to the published financial statements for full content.

The presentation may contain forward-looking information and may differ materially from the actual results.

TSI does not warranty as to the accuracy or completeness of such information and nor assume any undertaking further information becomes available or in light of changing circumstances. You shall not place undue reliance on any forward-looking information.



Agenda



01 | Company Profile



02 | Operation Overview



03 | Financial Performance



04 | Future Outlook



01

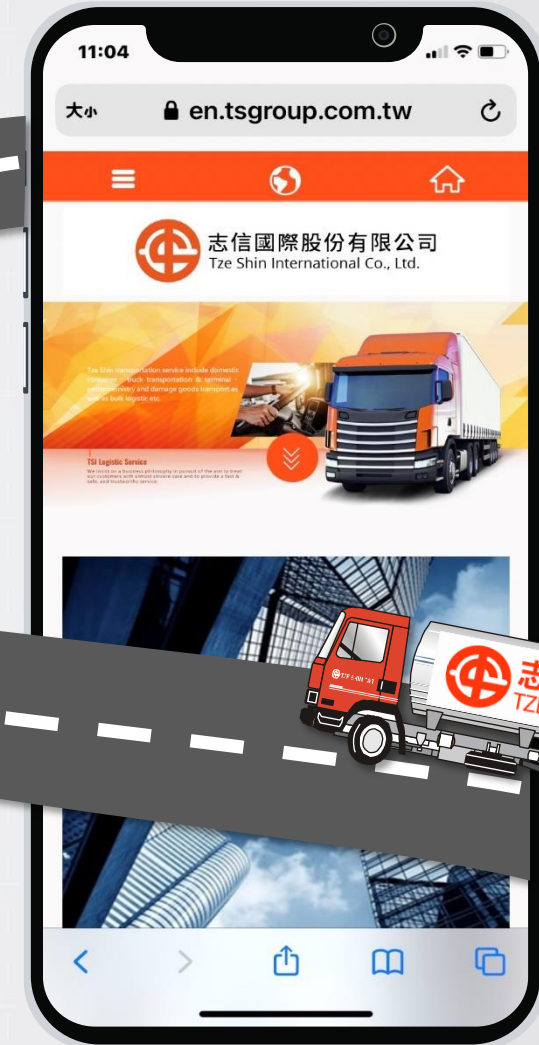


Company Profile

TZE SHIN INT'L

Company Profile

- Company Name : TZE SHIN International Co. Ltd.
- Established on : November 15th,1973
- Date of Listing : October 28th,1993
- Paid-in Capital : NTD\$ 1,718,202,470
- Business Segment : Truck & Container
Transportation 、 Construction 、
Tourism & Leisure 、 Trading



Business philosophy

In search of excellence and everlasting management

Sincerity and customer service oriented

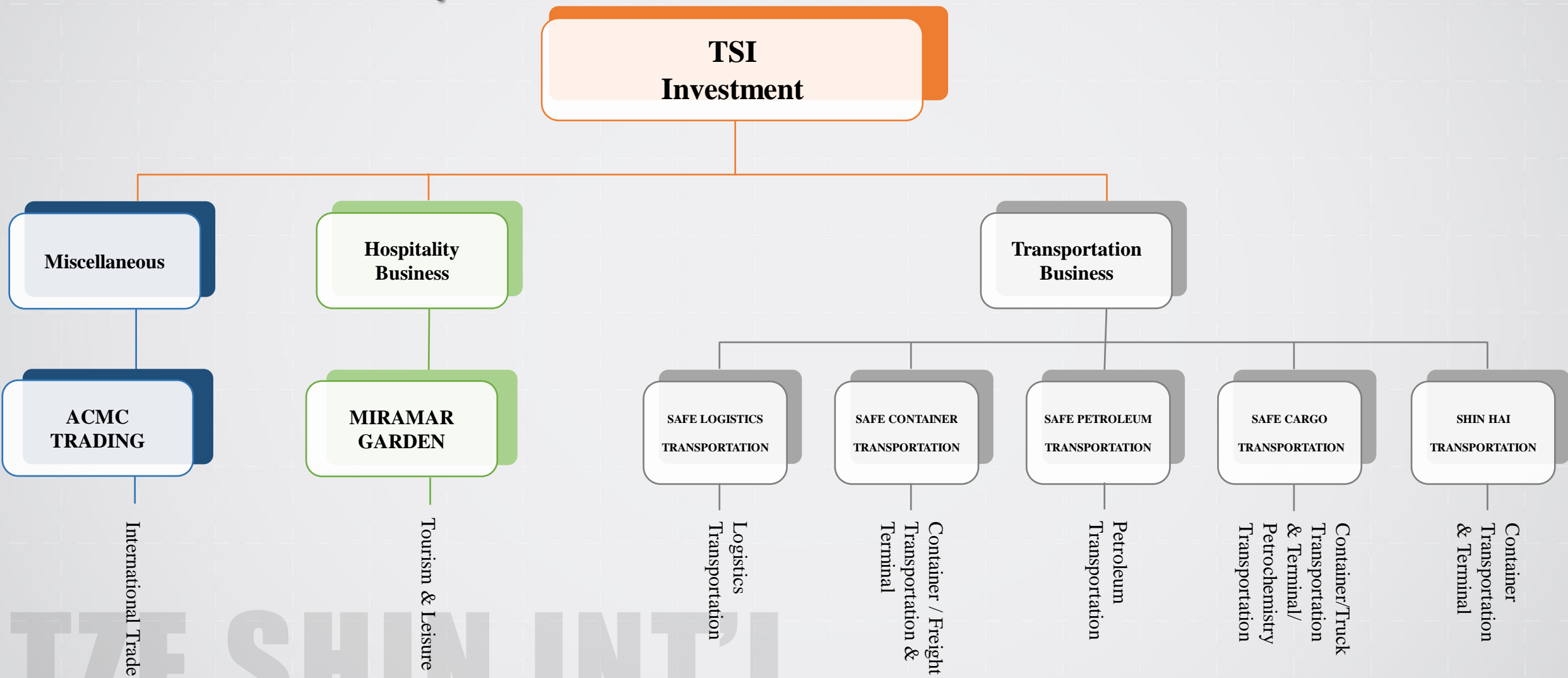
Determine -

Pursuit of excellence/
Sustainable development

Integrity -

Integrity first/Service-oriented

Business Scope



02



Operation Overview

TZE SHIN INT'L

Business Segments



TSI mainly focuses on container and cargo transportation, and its business scope covers construction, tourism and leisure, trading business, etc.

The company adheres to the business philosophy of pursuing excellence and sustainability, and is committed to achieving the triple-win goal of customer satisfaction, employee satisfaction and shareholder satisfaction.



Operation Overview

– Transportation Business

VALUE
01



Tze Shin transportation service includes domestic container 、 truck 、 bulk logistic and petrochemistry & dangerous goods.

VALUE
02



Tze Shin transportation fleets have FDA Food Business registration which are in line with FDA regulation.

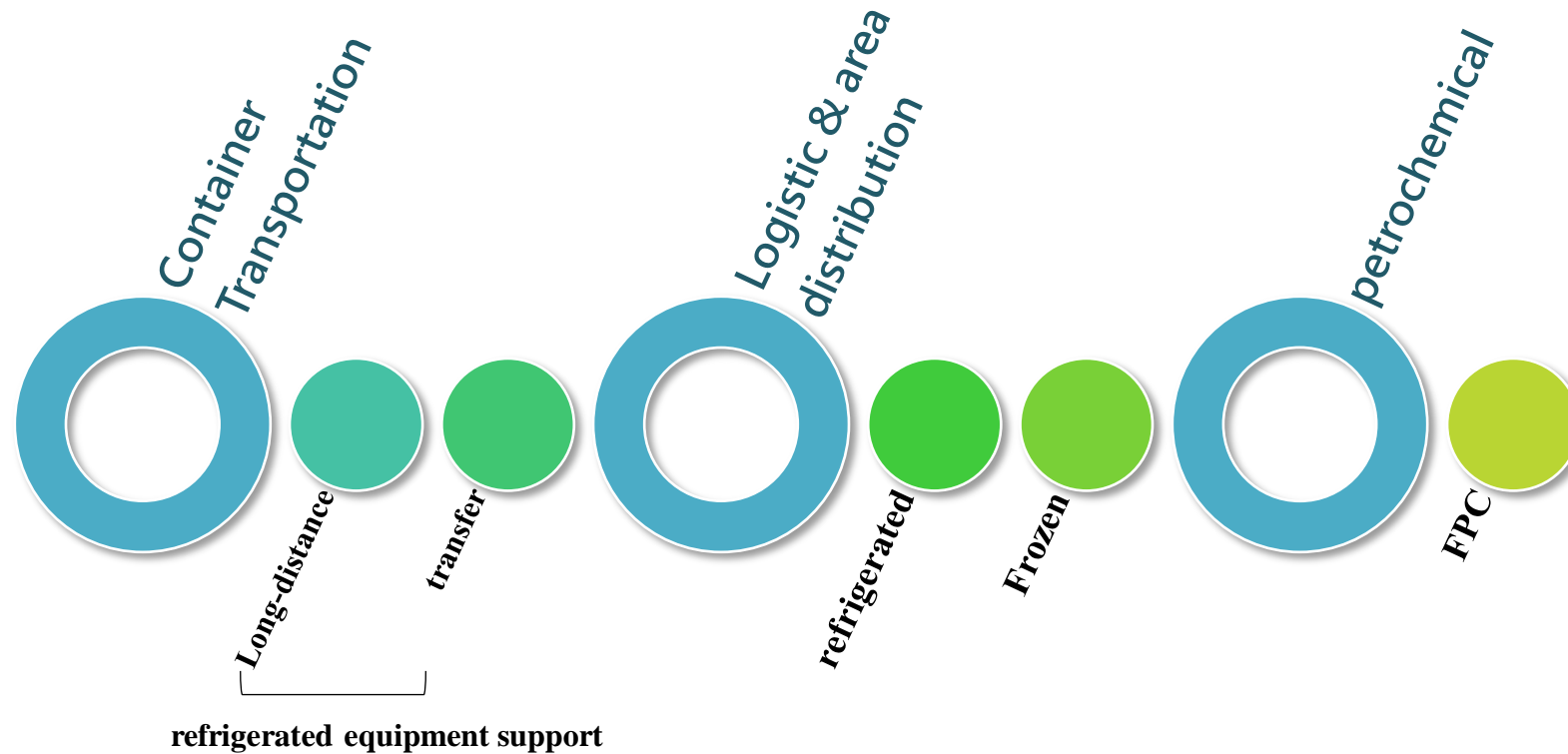
VALUE
03



Tze Shin upholds the core value of safety and customers first to provide a fast, safe, and trustworthy service.

TZE SHIN INT'L

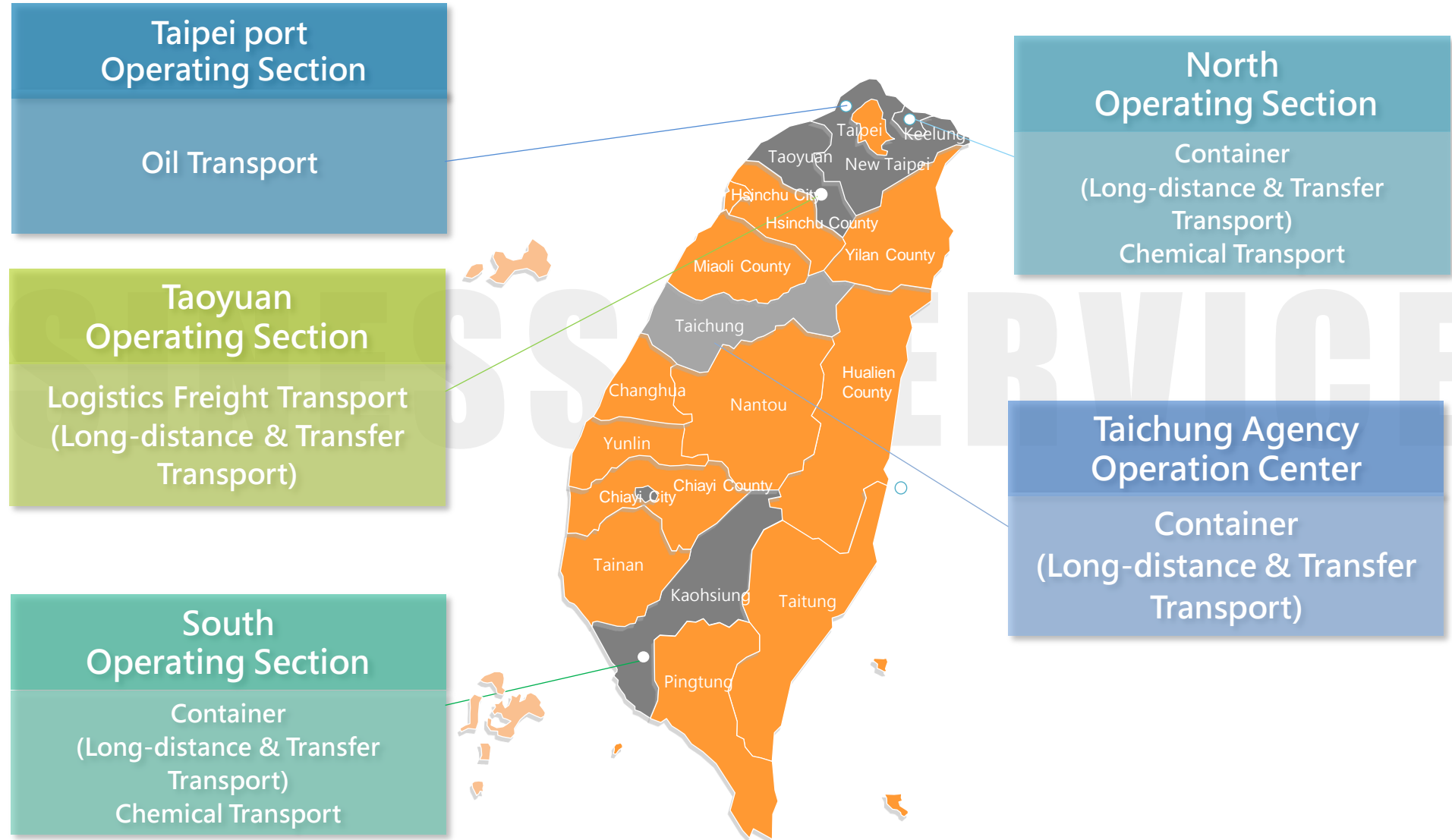
Inland Fleets and Services



- Shin Hai Transportation: Container Transportation
- Safe Cargo Transportation: Container & Truck Transport
- Safe Petroleum Transportation: Oil Transport, Chemical Transport

Operation Overview

–Transportation Business



Operation Overview

-Construction Business



Factory



Condo/
apartment



Shopping
center



Leisure
residence

The Construction department is committed to the development, planning for construction of factories, shopping malls and residential buildings; Mainly operating area are around of Taipei, Hsinchu and Taichung. In recent years, we have developed high-quality leisure and vacation residence communities to cater to the future market.



Operation Overview

-Hospitality Business

Miramar Hotel Group built up as classic European style combined with modern sophistication, by providing professional service, global view and treating customer as family.

In addition to joint folklore festival and participate government promotional campaign to win international and domestic business recognition.



MIRAMAR GARDEN TAIPEI



Diversified software and hardware facilities services

Provide comprehensive and complete service requirements, covering rich and exquisite delicacies, well-equipped fitness clubs, first-class business meeting facilities, as well as parking, laundry, in-room dining, business secretary multi-functional services, babysitting services and more in 2013 Private butler services, etc., are in meeting the leisure enjoyment of holiday travelers and the perfect functional needs of business people.

美麗信花園酒店 檢疫房入住流程



美麗信花園酒店
MIRAMAR GARDEN TAIPEI

Operation Overview

-Hospitality Business

Miramar Garden Hotel was approved by the Taipei City Government as a Quarantine Hotel on the 2nd November 2020. (Quarantine Hotel code : 02083)

We provide a safe and enjoyable quarantine experience for all our guests, please rest assured at Miramar Garden Hotel Taipei.



03



Financial Performance

TZE SHIN INT'L

Income Statements(consolidated)

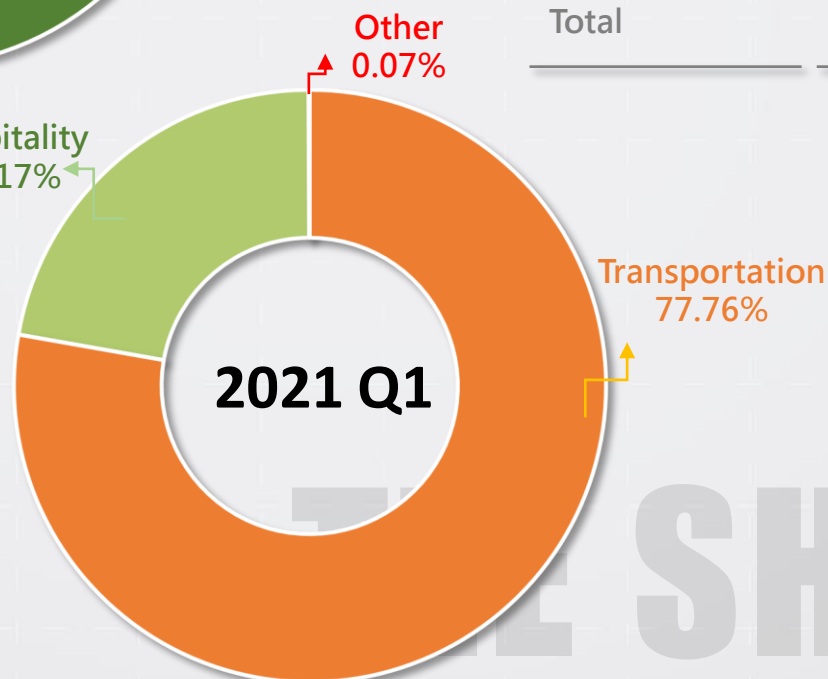
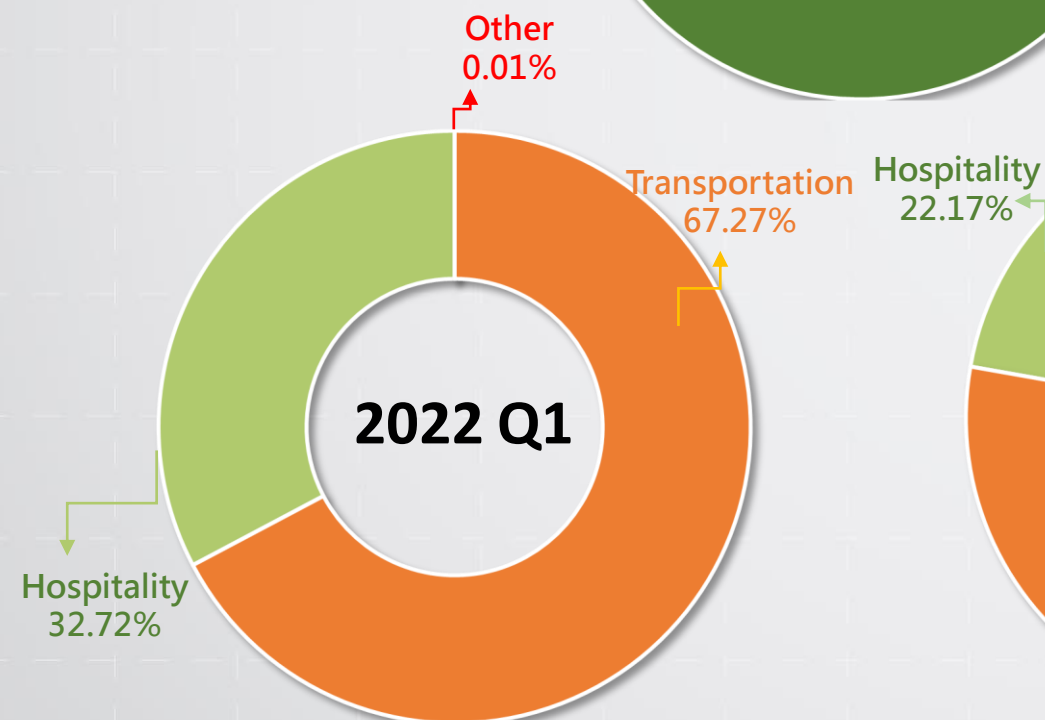
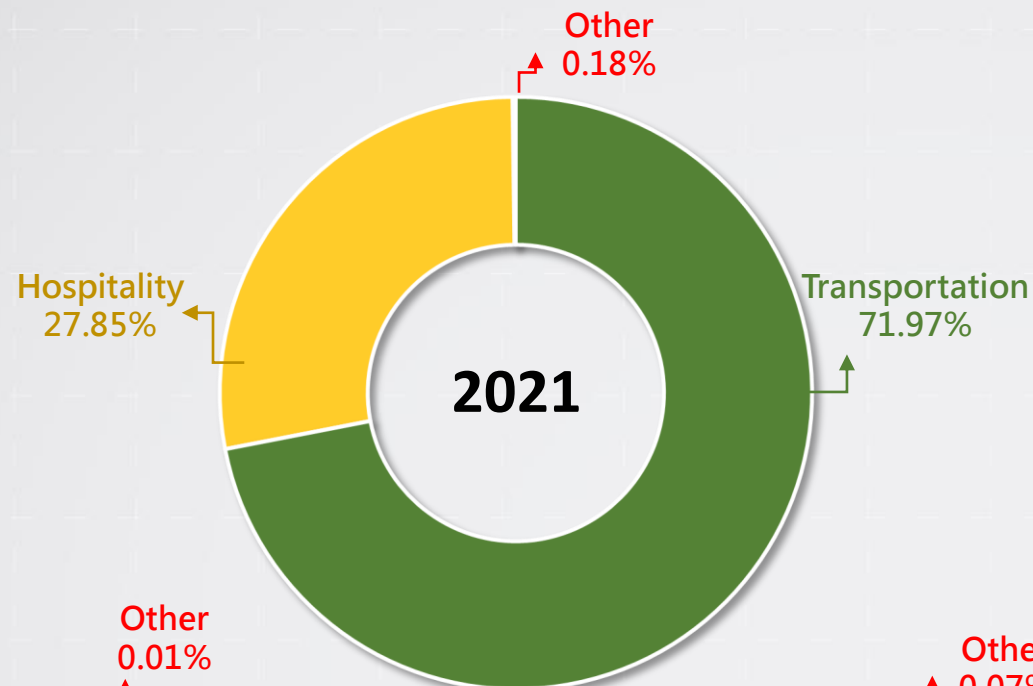
In Thousands of NTD

Item	2021	2022 Q1	2021 Q1	Increased (reduced) amount	YoY%
Operating Revenue	791,835	208,058	163,324	44,734	27.39%
Operating Costs	634,531	154,395	141,668	12,727	8.98%
Gross Profit	157,304	53,663	21,656	32,007	147.80%
Operating Expenses	189,107	44,505	44,948	(443)	-0.99%
Operating Income (Loss)	(31,803)	9,158	(23,292)	32,450	-139.32%
Non-operating Income and Expenses	357,984	32,710	99,344	(66,634)	-67.07%
Income before Tax	326,181	41,868	76,052	(34,184)	-44.95%
income tax expense(benefit)	10,901	1,341	(846)	2,187	-258.51%
Net Income	315,280	40,527	76,898	(36,371)	-47.30%
Consolidated Net Income Attributed to Stockholders of the Company	291,201	31,940	75,492	(43,552)	-57.69%
EPS(Unit: NT\$)	1.69	0.19	0.44	(0.25)	-56.82%

Main operating income

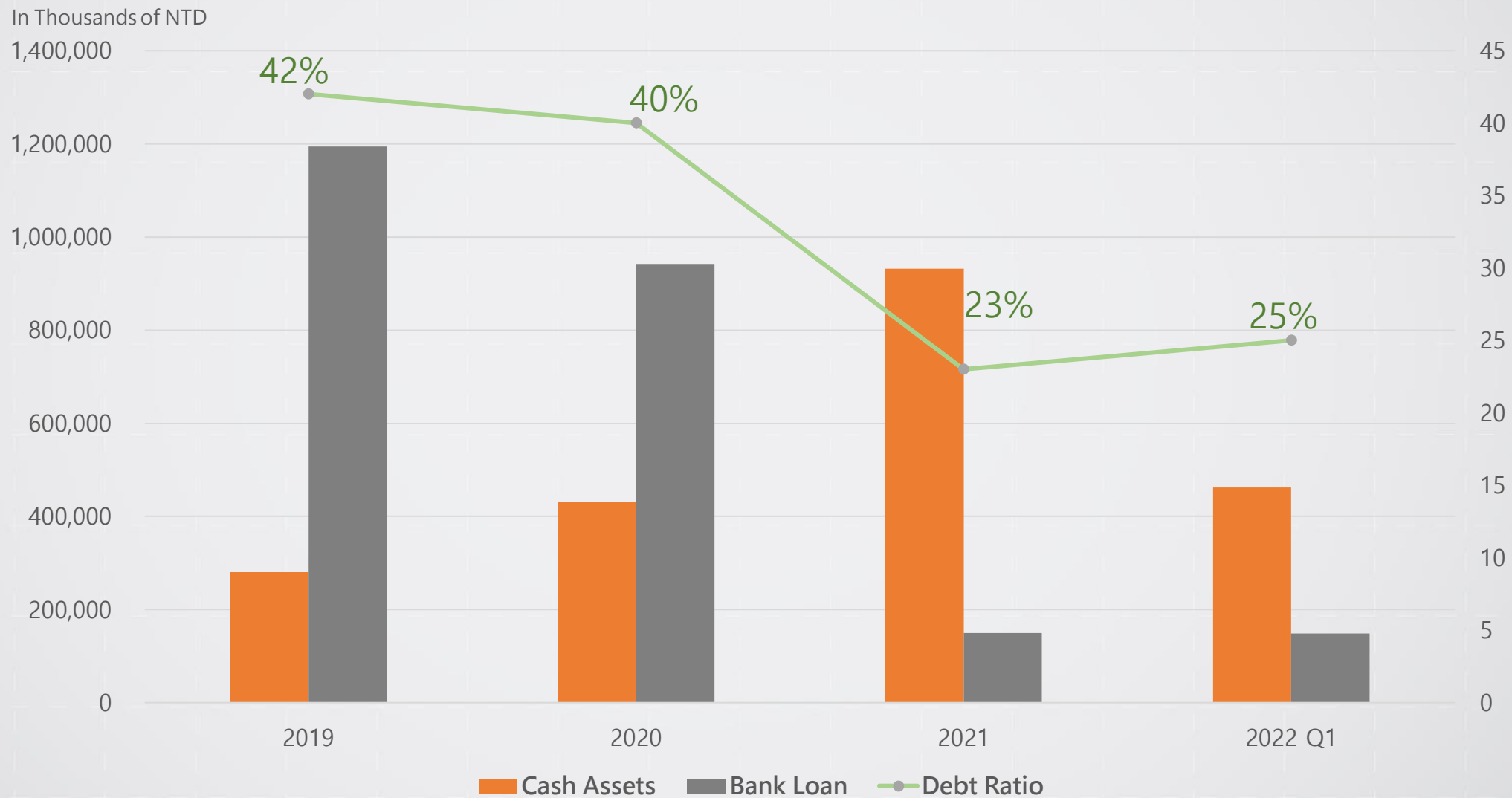
In Thousands of NTD

	2021	2022 Q1	2021 Q1
Transportation	569,898	139,958	127,006
Hospitality	220,533	68,069	36,201
Other	1,404	31	117
Total	791,835	208,058	163,324

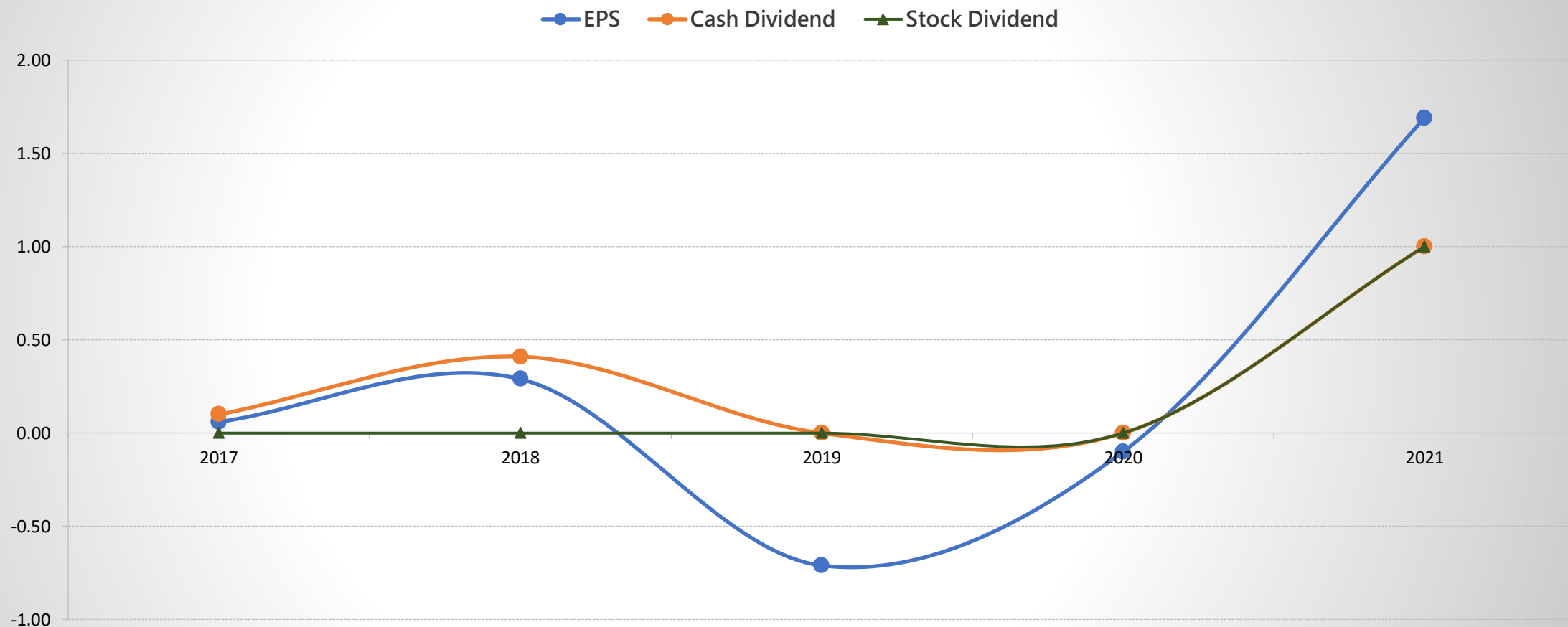


SHIN INT'L

Financial Position



Main operating income



Item/Year	2017	2018	2019	2020	2021
EPS	0.06	0.29	(0.71)	(0.10)	1.69
Cash Dividend	0.10	0.41	-	-	1
Stock Dividend	-	-	-	-	1

04



Future Outlook

TZE SHIN INT'L

Strategies of the Transport Industry to Respond to the COVID-19



In the face of the continuous increase of the covid-19 epidemic, the company has issued 『the health management and related contingency measures of the group employees during the epidemic prevention period』 to strengthen the health protection of colleagues.

TZE SHIN INTERNATIONAL CO., LTD.

Future Outlook

- For the construction developing business plan is committed to develop and focus on factories, shopping malls, and residential buildings to achieving long-term sustainability.
- Diversifying into hospitality industry, by the Miramar Hotel Group brand value and management skills to provide better services and know-how for further business success.
- By combining the cross-industry experience and resources of related companies , committed to expanding investment scope , and evaluate domestic and overseas investment projects , especially focus in green industry and ESG related , in order to achieve a diversified business model to create group synergy .

website address : <http://www.tsgroup.com.tw>

search website : <http://mops.twse.com.tw>



THANK YOU